

TMPD Knowledge Paths Tool

RC Training, Support & Resources Workshop

March 18, 2021



Introduction

A First Nations organization dedicated to serving and supporting First Nations communities who want to re-establish control over their lands, natural resources, and environment through the historic government-to-government *Framework Agreement on First Nation Land Management*.

RC was established by the LAB to undertake its technical responsibilities to FNs, through:



"Supporting First Nations to exercise their Inherent Right to govern their Lands, Environment and Resources."

Presenters



**Angie
Derrickson**
Manager Training,
Mentorship &
Professional
Development



Lise Steele
Coordinator
Training, Mentorship
& Professional
Development

Who We Are

A First Nations organization dedicated to serving and supporting First Nations communities in the management of their lands, natural resources, and environment through the historic government-to-government relationship. We provide technical assistance and support in Land Management.

DISCOVER MORE ABOUT THE RC

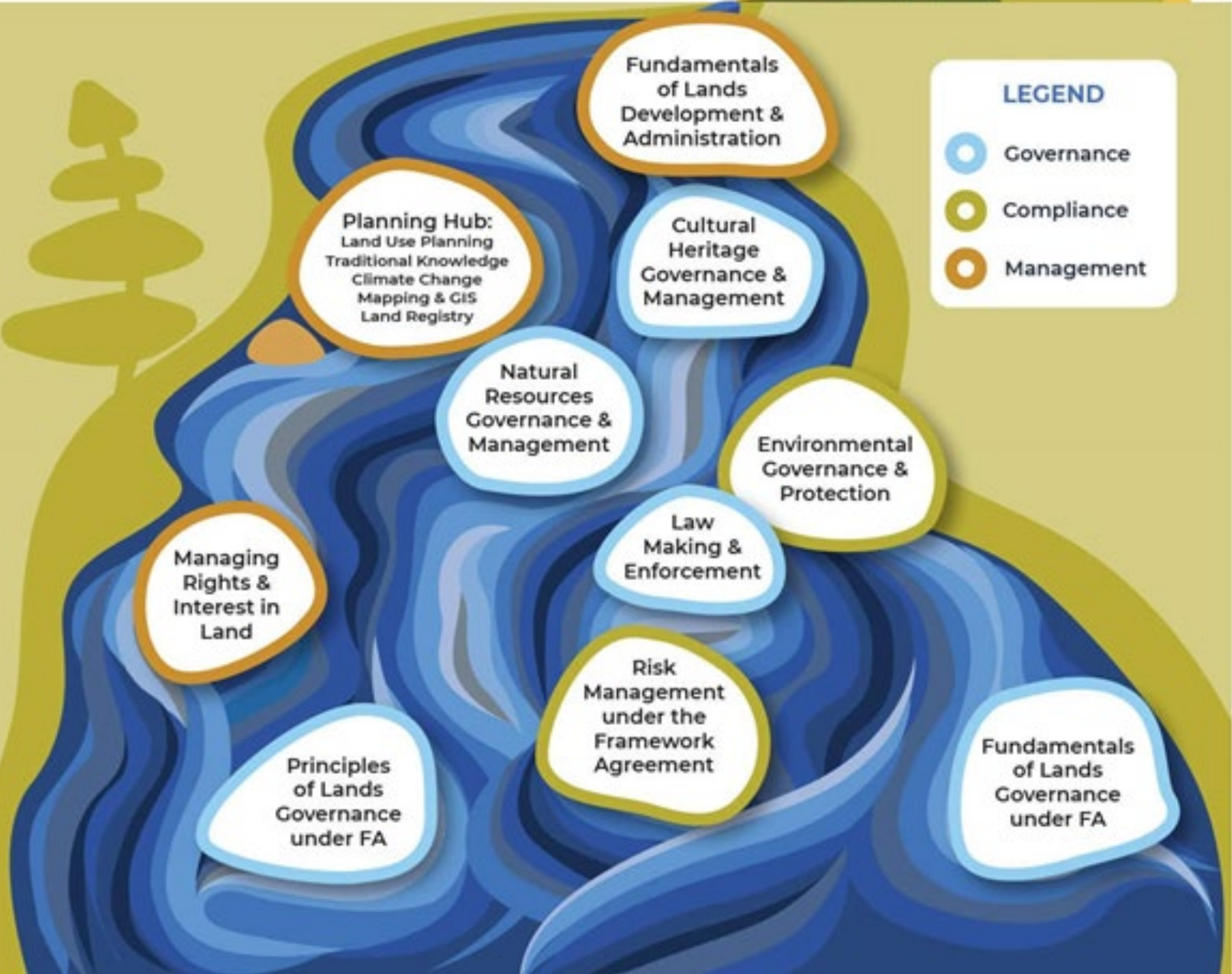
- Getting Started >
- Resources & Knowledge Sharing
- Training & Workshops
- Lands Governance Manual
- Knowledge Paths Tool**
- Planning
- COVID-19 & Emergency Support



TMPD Knowledge Paths Tool

KNOWLEDGE PATHS

Lands Governance Under Framework Agreement



INTRODUCTION — KNOWLEDGE PERSPECTIVES



Workshops

- Specific subject areas
- Land Code Implementation Practices
- Community-specific Themes and Needs
- Current or new practices

Online Resources

- Land Governance Manual
- Online Courses
- Knowledge Repository
- FA specific toolkits
- FA specific online materials
- Recorded webcast sessions

Mentorship, Community of Practice and Support

- Access to RC expertise for advice and support services
- Mentoring by RC experts and Operational community representatives
- Access to LAB Directors



Lands Governance Director

The person employed by the First Nation to oversee the day-to-day operations of the Lands Department and the administration of the First Nation Land Code, and where applicable, the signing of documents, including written instruments, as authorized by Council



Chief & Council

The governing body of the First Nation comprised of the duly elected Chief and Council that are accountable for the authorities provided under the First Nation Land Code



Lands Committee

Each Lands Committee will vary based on the structure outlined in the First Nation's unique Land Code. Some comprise of youth, elder, members at large, and may include lands department and other administrative staff or consultants that support the implementation of the First Nation Land Code



Community

The members of the First Nation under the First Nation Land Code and in some cases, non-member interest holders on First Nation Lands

Learner Login

TMPD Knowledge Paths Tool

LOG IN

[Forgot Password?](#)

[First time here? Register Now](#)



Angie Derrickson

Resource Centre

[Introduction - TMPD Strategy](#)

Your Profile

[Knowledge Path](#)

[Activities](#)

[Log Out](#)

Your Profile

Details

Picture

Security

Account Details

Manage your personal information.

First Name :

Angie

Last Name :

Derrickson

Position :

TMPD Manager

Community :

Resource Centre

Street Address :

3255 Coyote Crescent

Address Line 2 :

Address Line 2



Angie Derrickson

Resource Centre

[Introduction – TMPD Strategy](#)

[Your Profile](#)

[Knowledge Path](#)

[Activities](#)

[Log Out](#)

Your Knowledge Path

The TMPD Knowledge Path is a valuable tool that can be used to inform, expand and support your learning goals. Identify your learning needs to strengthen your core land governance competencies that lead to the growth and advancement in your knowledge, successes and effective governance approaches over your community lands and resources.

Once complete, save your Knowledge Path as a PDF, print it, or email it to yourself for later reference.



Land Governance Professional Reflections

What training and professional development knowledge do I need to support my community's land governance objectives?

What training and professional development knowledge do I need to advance my own career?

[← BACK](#)

[NEXT →](#)



Angie Derrickson

Resource Centre

[Introduction - TMPD Strategy](#)

[Your Profile](#)

Knowledge Path

[Activities](#)

[Log Out](#)

Your Knowledge Path

The TMPD Knowledge Path is a valuable tool that can be used to inform, expand and support your learning goals. Identify your learning needs to strengthen your core land governance competencies that lead to the growth and advancement in your knowledge, successes and effective governance approaches over your community lands and resources.

Once complete, save your Knowledge Path as a PDF, print it, or email it to yourself for later reference.



Identification of Training and Professional Development Needs

Based on my reflections, I feel my training and professional development needs are:

Goal 1

Goal 2

[← BACK](#)

[NEXT →](#)



Angie Derrickson

Resource Centre

[Introduction – TMPD Strategy](#)

[Your Profile](#)

[Knowledge Path](#)

[Activities](#)

[Log Out](#)

Your Knowledge Path

The TMPD Knowledge Path is a valuable tool that can be used to inform, expand and support your learning goals. Identify your learning needs to strengthen your core land governance competencies that lead to the growth and advancement in your knowledge, successes and effective governance approaches over your community lands and resources.

Once complete, save your Knowledge Path as a PDF, print it, or email it to yourself for later reference.



Establishment of Land Governance Knowledge Goals

Based on my training and professional development needs what goals am I setting for myself over the next year?

Goal 1

Goal 2

[← BACK](#)

[NEXT →](#)



Angie Derrickson

Resource Centre

[Introduction – TMPD Strategy](#)

[Your Profile](#)

Knowledge Path

[Activities](#)

[Log Out](#)

Your Knowledge Path

The TMPD Knowledge Path is a valuable tool that can be used to inform, expand and support your learning goals. Identify your learning needs to strengthen your core land governance competencies that lead to the growth and advancement in your knowledge, successes and effective governance approaches over your community lands and resources.

Once complete, save your Knowledge Path as a PDF, print it, or email it to yourself for later reference.



My goals are related to the following Knowledge Paths:

Land Governance Perspective

Goal 1 Governance

Knowledge Focus Area

Goal 1 Framework Agreement and Land Codes

Learning Component

Goal 1 Workshop



Angie Derrickson

Resource Centre

[Introduction – TMPD Strategy](#)

[Your Profile](#)

Knowledge Path

[Activities](#)

[Log Out](#)

Your Knowledge Path

The TMPD Knowledge Path is a valuable tool that can be used to inform, expand and support your learning goals. Identify your learning needs to strengthen your core land governance competencies that lead to the growth and advancement in your knowledge, successes and effective governance approaches over your community lands and resources.

Once complete, save your Knowledge Path as a PDF, print it, or email it to yourself for later reference.

Land Governance Professional Reflections Identification of Training and Professional Development Needs Establishment of Land Governance Knowledge Goals My goals are related to the following Knowledge Paths

What types of Knowledge activities could assist me in achieving the goals I have set?

What types of knowledge activities could assist me in achieving the goals I have set?

Organized Activities

Goal 1 ▼

Independent Activities

Goal 1 ▼

Please state :

Goal 1



Angie Derrickson

Resource Centre

[Introduction – TMPD Strategy](#)

[Your Profile](#)

Knowledge Path

[Activities](#)

[Log Out](#)

Your Knowledge Path

The TMPD Knowledge Path is a valuable tool that can be used to inform, expand and support your learning goals. Identify your learning needs to strengthen your core land governance competencies that lead to the growth and advancement in your knowledge, successes and effective governance approaches over your community lands and resources.

Once complete, save your Knowledge Path as a PDF, print it, or email it to yourself for later reference.

[+ ADD GOAL](#)

[HIDE GOALS](#)

Edit Goals: [SELECT YEAR](#)

[PRINT](#)

[PDF](#)

2020/2021

Land Governance Professional Reflections

1. What training and professional development knowledge do I need to support my community's land governance objectives?

ADD

2. What training and professional development knowledge do I need to advance my own career?



Angie Derrickson

Resource Centre

[Introduction – TMPD Strategy](#)

[Your Profile](#)

[Knowledge Path](#)

Activities

[Log Out](#)

Your Activities

The Resource Centre is committed to assist operational communities in identifying their priorities, needs, and work planning for the successful implementation of their Land Code. With our TMPD Strategy, signatories have access to meaningful content intended to strengthen staff development in the field of land governance under the Framework Agreement.

Learners can create their own Knowledge Path account under the TMPD strategy, non-signatory members are not available at this time.

The final date for reporting Knowledge Path Activities for the calendar year is May 15.

[+ ADD ACTIVITY](#)

[VIEW PAST ACTIVITIES](#)

Edit Activities: SELECT ACTIVITY

2020

[PRINT](#)

[PDF](#)

Description of Knowledge Path Activity	Activity Date	Learning Unit Type	Certificate
Part 3 COVID Law	06/04/2020	Developing a TUS/TEK study	



Angie Derrickson

Resource Centre

[Introduction - TMPD Strategy](#)

[Your Profile](#)

[Knowledge Path](#)

Activities

[Log Out](#)

Activities

The Resource Centre is committed to assist operational communities in identifying their priorities, needs, and work planning for the successful implementation of their Land Code. With our TMPD Strategy, signatories have access to meaningful content intended to strengthen staff development in the field of land governance under the Framework Agreement.

Learners can create their own Knowledge Path account under the TMPD strategy, non-signatory members are not available at this time.

The final date for reporting Knowledge Path Activities for the calendar year is May 15.

[Description of Knowledge Path Activity](#)

[Activity Date](#)

[Learning Unit Type](#)

Description of Knowledge Path Activity

[← BACK](#)

[NEXT →](#)



**FIRST NATIONS
LAND MANAGEMENT
RESOURCE CENTRE**

**Training, Mentorship &
Professional Development**



KNOWLEDGE SHARING RECOGNITION CERTIFICATE

AWARDED TO

JOHN GREEN

FIRST NATION NAME

For your contribution to the

Workshop Name

Feb 20-21, 2020

With tremendous appreciation

Angie Derrickson

ANGIE DERRICKSON

TMPD Manager

Lise Steele

LISE STEELE

TMPD Coordinator



TMPD Highlights and Stats from 2019-2020

Workshops

- 2 days per session across Canada
- 19 sessions, 7 topics

Online Courses

- 7 themes
- 17 online courses

Land Use Planning

- 4 regional sessions
- 82 participants
- 50 signatories

Solid Waste Management

- 3 regional sessions
- 95 participants
- 52 signatories

FNLRS 201 Land Registry & Privacy Act

- 3 regional sessions
- 90 participants
- 62 signatories

Climate Change

- 3 regional sessions
- 130 participants
- 70 signatories

Land Use Planning

- LUP 101 – Introduction & Process
- LUP 201 – Ethics & Assistance
- Introduction to Mapping
- Introduction to Geographic Information Systems (GIS)

Solid Waste Management

- SWM 101 – SWM & the Framework Agreement (FA)
- SWM 102 – Municipal Type Service Agreements (MTSA's)
- SWM 103 – Law-Making & Enforcement under the FA

First Nation Land Registry

- First Nation Land Registry 101
- First Nation Land Registry 201

Climate Change

- Climate Change 101: An Introduction to Climate Science
- Climate Change 102: Planning for Climate Resilience under the Framework Agreement

Financial Governance

- 1 national session
- 122 participants
- 71 signatories

GIS-Mapping

- 3 regional sessions
- 124 participants
- 71 signatories

Law Enforcement

- 1 national session
- 113 participants
- 58 signatories

Financial Governance

- Financial Governance 101

Land Law Development

- Law Enforcement
- Enforcement 102: Understanding the Enforcement and Investigation Process
- Enforcement 103: Enforcement of First Nation Environmental Laws

COVID-19 & Emergency Planning

- COVID-19 Part 1: Emergency Planning under the Framework Agreement
- COVID-19 Part 2: Emergency Law Development under the Framework Agreement

Webinars

- 1.5 hours per session
- 3 sessions, 3 topics

Partnerships

- 2 sessions
- 1 bilingual

Framework Agreement Amendments

- Invitation to all signatories

Introduction to Increasing the Benefits of ATRs & TLEs

- Invitation to all signatories

FNLRS 101 Land Registry under Framework Agreement

- Invitation to all signatories

Matrimonial Real Property & Framework Agreement Amendments

- NALMA Conference

Introduction to Increasing the Benefits of ATRs & TLEs

- TULO partnership

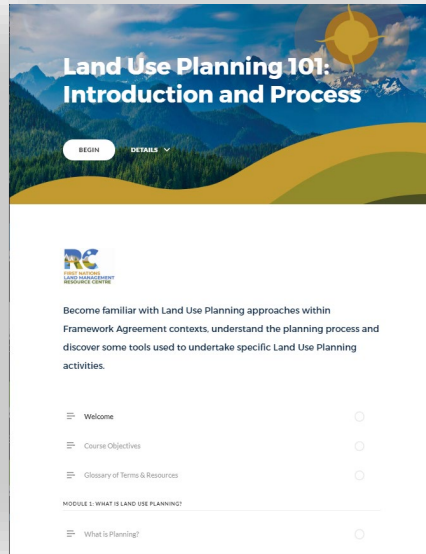
Questions & Discussion



- Getting Started >
- Resources & Knowledge Sharing
- Training & Workshops**
- Lands Governance Manual
- Knowledge Paths Tool
- Planning
- COVID-19 & Emergency Support

ONLINE COURSE CATALOGUE

Training &

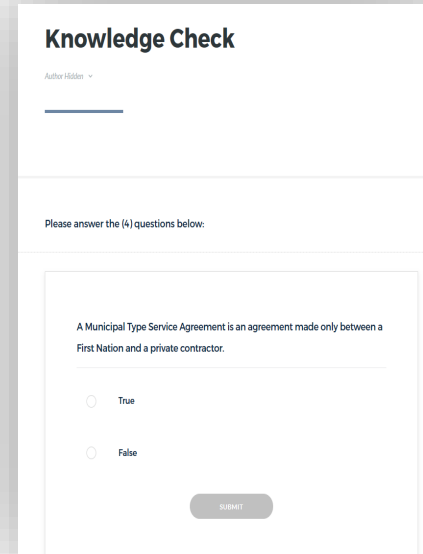


Desktop

Tablet

Smart Phone

Workbook



Practice Your Understanding

True / False

Multiple-Choice

LAND GOVERNANCE MANUAL

- Getting Started 
- Resources & Knowledge Sharing
- Training & Workshops
- Lands Governance Manual**
- Knowledge Paths Tool
- Planning
- COVID-19 & Emergency Support

RC

LAND GOVERNANCE MANUAL

A Guide to Best Practices for Land Governance

A resource tool for Operational First Nations under Framework Agreement on First Nation Land Management

GET STARTED 

- Background
- Land Governance Authority
- Operational Start Up
- First Nation Land Registry
- Land Registry Checklists & Procedures
- Individual Land Interests / Allotments
- Traditional Land Holdings
- Lands Inventory & File Management
- Mapping (GIS)
- Land Use Planning
- Website Development
- Land Law, Regulation & Policy
- Surveys & Related Documents
- Natural Resources
- Environment
- Wills & Estates
- Knowledge Sharing

KNOWLEDGE REPOSITORY

- Getting Started
- Resources & Knowledge Sharing
- Training & Workshops
- Lands Governance Manual
- Knowledge Paths Tool
- Planning
- COVID-19 & Emergency Support

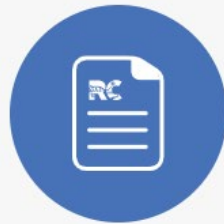
Browse Categories

- FRAMEWORK AGREEMENT
- FIRST NATION PROFILE PAGES
- LAND GOVERNANCE AUTHORITY
- LAND LAW DEVELOPMENT
- FIRST NATION LAND REGISTRY
- LAND INTERESTS
- LAND SURVEYS
- LAND USE PLANNING
- MAPS & MAPPING (GIS)
- CULTURAL, HERITAGE & TRADITIONAL USE
- NATURAL RESOURCES
- ENVIRONMENT
- ONLINE COURSES
- LAND GOVERNANCE MANUAL
- VIRTUAL WEBINARS & WORKSHOPS

Order By:

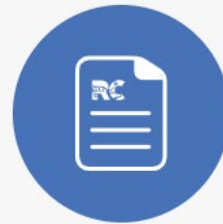
Order:

TMPD WORKSHOP: Impacts of COVID 19 – PART 6



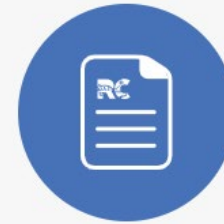
VIEW RESOURCE

TMPD WORKSHOP: Consultation & Engagement



VIEW RESOURCE

TMPD WEBINAR: Treaties & FA



VIEW RESOURCE

SUMMARY - How to access support

First Nation Requests Support



**RC Support
Technicians
/ Managers**



Land Code Governance

GIS &
Traditional
Knowledge

Communication
& Public
Relations

Environment

Surveys &
Legacy Issues

Land
Registry

Land Use
Planning

Solid Waste
Management

Law
Development &
Enforcement

LGM &
Knowledge
Path Tools