



@magfn.aakii



@magfn.aakii

www.magfn.com

Magnetawan First Nation Species at Risk and Turtle Egg Incubation Program

Lands Manager

Samantha Noganosh

*Species at Risk Biologist and Program
Coordinator:*

Alanna Smolarz

Conservation Biologist and Wildlife Specialist:

Nadine Perron



Alanna Smolarz

Species at Risk
Biologist & Program
Coordinator



Samantha Noganosh
Lands Manager



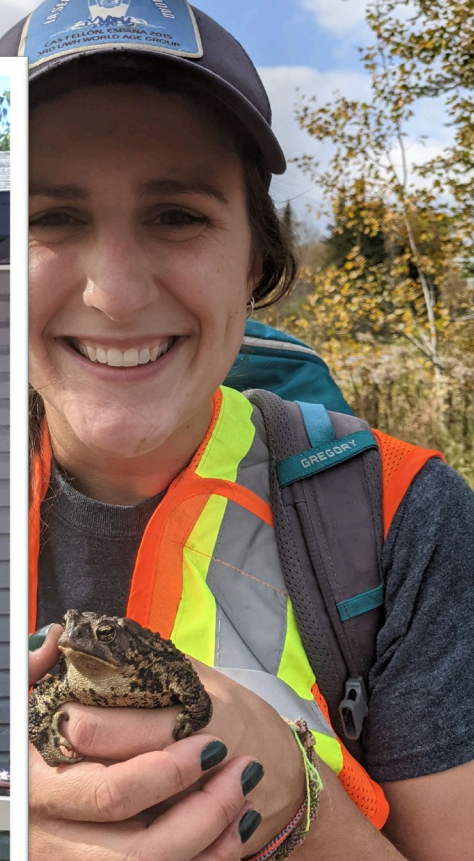
Nadine Perron

Conservation Biologist
and Wildlife Specialist



Alanna

Species
Biologist &
Coord



the Perron

tion Biologist
life Specialist



Programs & Projects

Traditional
Land-Use &
Mapping Study

Fish Monitoring
Sturgeon & Walleye
assessment

Bats of
Georgian Bay

Environmental
Management
Plan

Capital Plan &
Land-Use Plan

MTO Highway
69 expansion

Henvey Inlet
Wind Farm &
Transmission
Line

**AFSAR (10
years)**
SAR and Incubation

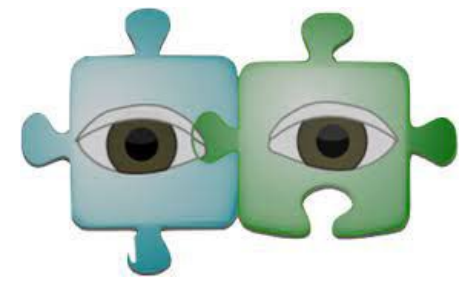
**Indigenous
Guardians
Network**

**Community Based
Climate Change
Monitoring Program**



Main Funding Sources for our
SAR & Community Programs

Species At Risk on Magnetawan First Nation



(Bartlett and Marshall 2009; Bartlett et al. 2012)

- Road Ecology
- Population Monitoring
- Egg Incubation
- Research Project Partnerships
- Construction Crew training



- Pristine contiguous wetlands
- Marsh, swamp, fen, bog and peatlands,
- Biodiversity hotspot for SAR reptiles.

SAR Program

- Road Ecology
 - Interaction of reptiles with roads
 - Corridor hotspots
- Population Monitoring
 - Targeted habitat surveys
 - Gestation Sites (Massasauga)
 - Nesting Sites (Turtle)
 - Overwintering Sites (all reptiles)
 - PIT tagging/notching
 - Monitor individual's health, growth, distribution
 - Turtle telemetry
- Community observations extremely valuable
- All used to inform mitigation



SAR Program

- Re
- Po
- Co
- ex
- Al



ds

a)

tiles)

on



Turtle Incubation Station on Magnetawan First Nation!

2022 summary:

- ~1500 eggs collected from various species
- Collected from vulnerable locations
 - Flooding/Climate Change
- Parry Sound District...and beyond

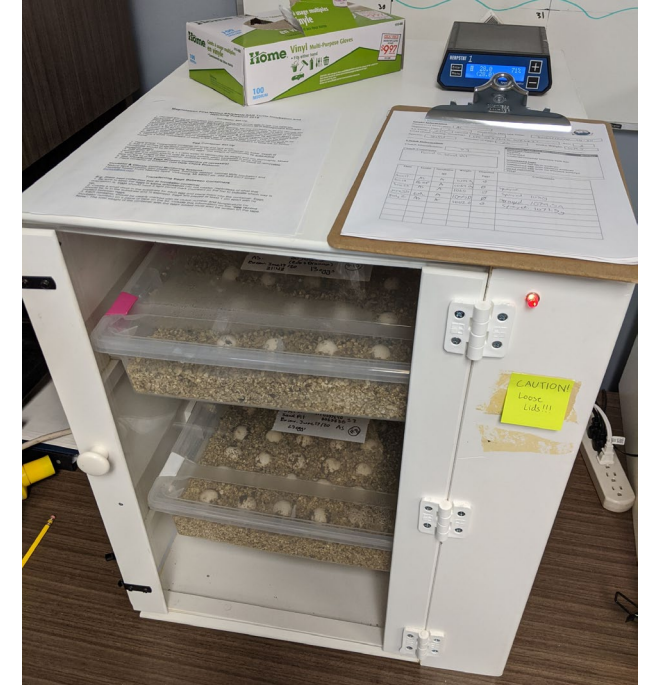


In partnership with Georgian Bay Biosphere, Shawanaga First Nation, Scales Nature Park

Turtle Incubation Station on Magnetawan First Nation!

2022 summary:

- Various species
- Released back to their home wetlands
- Increase chances of survival from <math><1\%</math> to 6%



SAR Program: Outreach and education





Indigenous and Northern Affairs Canada

Affaires autochtones et du Nord Canada



Environment and Climate Change Canada



Laurentian University
Université Laurentienne



MAC
ecohydrology
McMaster Ecohydrology Lab



United Nations
Educational, Scientific and
Cultural Organization



GEORGIAN BAY
BIOSPHERE
MNIDOO GAMII
Spirit of the Water



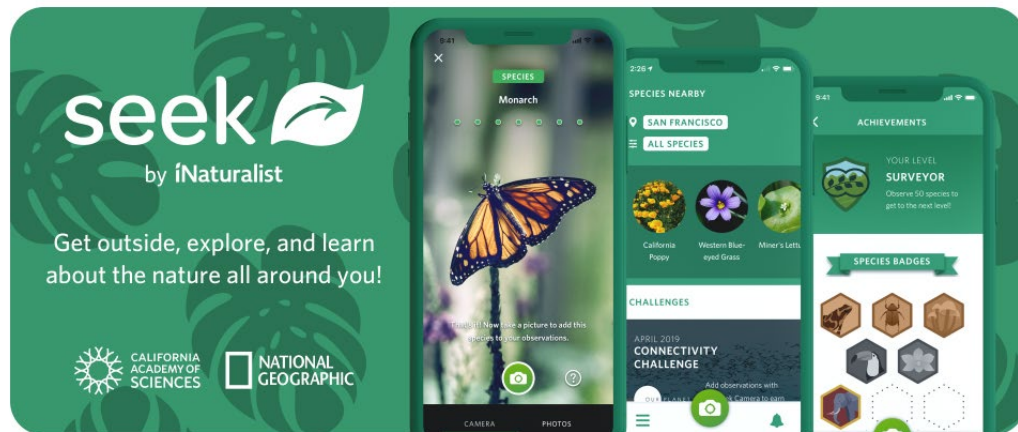
Maamwi Anjiakiziwin
Together • Renewal • Land • Life

Partnerships (Academic & Industry)

- Increases capacity
- Technical Knowledge sharing!
- Financial support (MSc student positions funded by universities)
 - Often have technician positions available
 - Great for community members
- Connection to community 😊
- Emphasize Two-Eyed seeing approaches in any and all research programs
- Starting point for long-term

Some of our favourite resources:

- [Ontario Nature](#): Species information and interactive [map](#)
- [Land Information Ontario](#): Mapping resource (wetland shapefiles etc.)
 - NHIC make a map online [GIS application](#) (FREE!)
 - [NHIC](#) website overall has great information, reporting, resources etc.
- [iNaturalist](#): FREE way to record observations, discuss your findings, get help with ID. Connected to another phone app called [Seek](#)
- [Ontario Turtle Conservation Centre](#) (Turtle Hospital and education center)
- Local [wildlife centers](#)*** (Hobbitstee, Turtled Kingston, Sandy Pines Wildlife center, Turtle Pond, Aspen Valley, Shades of Hope etc. etc.)
- [Weaving Knowledges website](#) (coming soon)



Questions?!

