

Training, Mentorship & Professional Development

Overview & Wrap Up



First Nation Land Governance Activities



TMPD Strategy

SUPPORT



WORKSHOPS



ONLINE COURSES



LAND GOVERNANCE
MANUAL



KNOWLEDGE
REPOSITORY



DIRECT COMMUNITY
SUPPORT

WE ARE... ▾

I AM A... ▾

FRAMEWORK AGREEMENT

GOVERNANCE TOOLS ▾

DISCOVER ▾

EVENTS ▾

CONTACT US

UPCOMING EVENTS

PAST EVENTS

UPCOMING EVENTS

PAST EVENTS



Mar 11, 2020 - Mar 12, 2020

[Google Map](#)

National Law Enforcement Workshop Target Audience: Operational & Developmental Signatory First Nations Land Governance Directors / Land Managers, Band Managers, Lands Committee Members, Enforcement Officers, Youth, Elders This learning workshop [...]

[Find out more >](#)

Law Enforcement Workshop – NATIONAL



Feb 19, 2020 - Feb 20, 2020

[Google Map](#)

GIS / Mapping - BC Region Workshop Target Audience: Operational & Developmental Signatory First Nations Land Governance Directors / Land Managers, Band Managers / CAO's, GIS-Mapping Specialists, Lands Committee Members, [...]

[Find out more >](#)

GIS / Mapping Workshop – BC

WE ARE... ▾

I AM A... ▾

FRAMEWORK AGREEMENT

GOVERNANCE TOOLS ▾

DISCOVER ▾

EVENTS ▾

CONTACT US

LANDS GOVERNANCE
MANUAL**TRAINING**

RESOURCES

Workshops

Online Courses

Land Governance Manual

Knowledge Repository

Direct Community Support

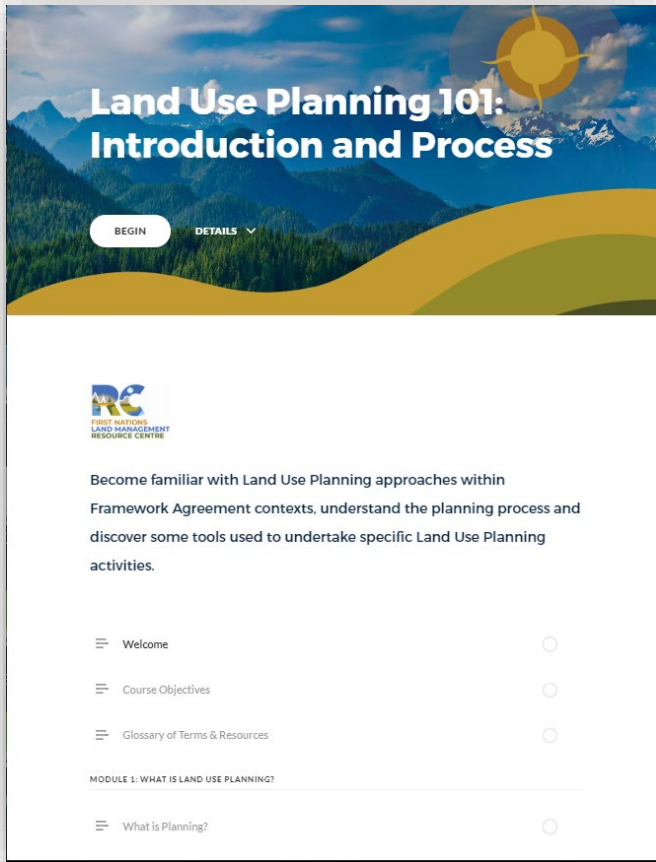
Online Courses

Online Courses are short courses that have been created on topics that are informed by the key functions of a Lands Governance Director, Lands Manager or other Lands related staff operating under the Framework Agreement. These courses also have a supporting Workbook, presentation and supplemental resources that can be used in webinars, workshops and individual learning. Courses are reviewed and updated periodically as laws and other content changes come into effect. There are presently over 45 online courses available, with several additional ones in development.

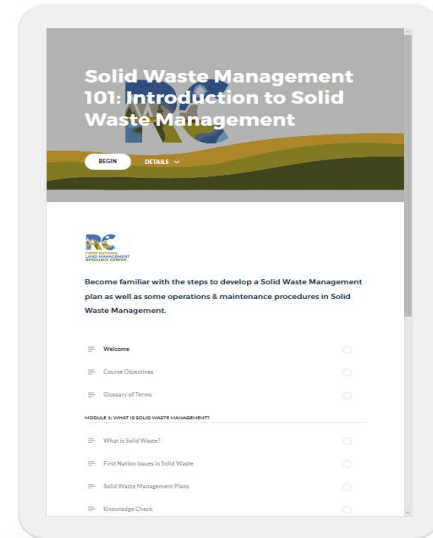
Note: **Adobe Flash** must be installed on your computer to view online courses.

Online Course – Multiple Viewers

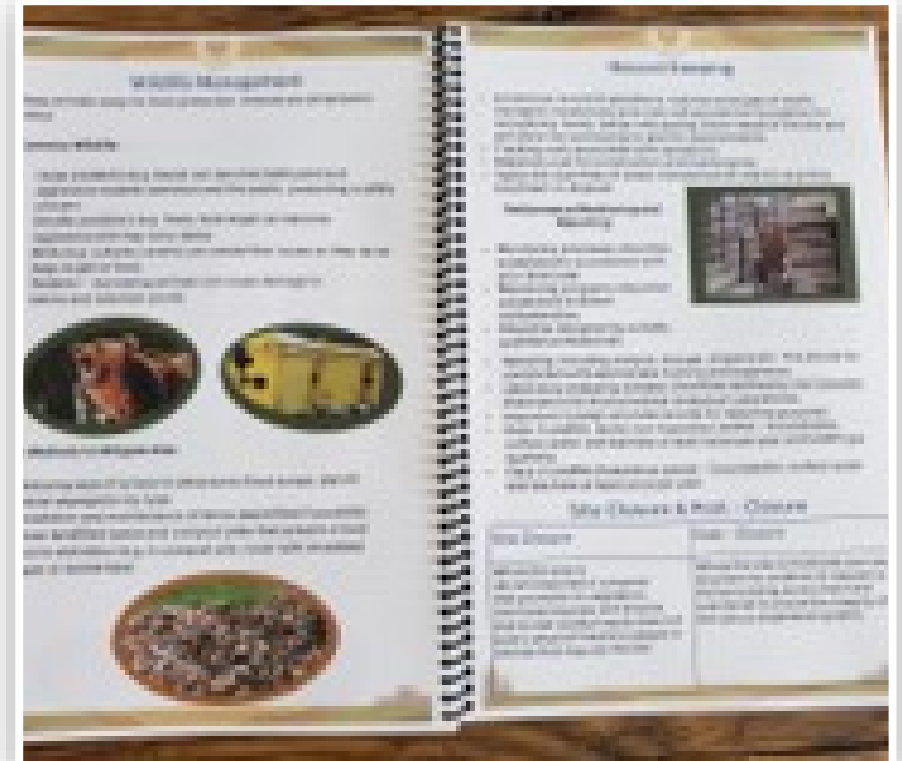
Desktop



Tablet



Workbook



Smart Phone



Online Course – Knowledge Checks

Knowledge Check

Author Hidden ▾

Please answer the (4) questions below:

A Municipal Type Service Agreement is an agreement made only between a First Nation and a private contractor.

- True
- False

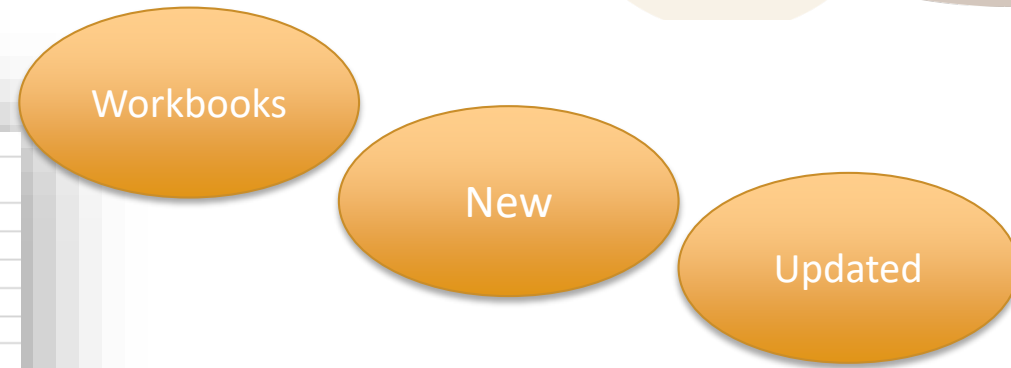
SUBMIT

Practice your understanding of materials

- True / False
- Multiple-Choice

Contact us if there are any knowledge gaps

Online Course – Tracking



Course Tracking Sheet

#	Course Name	Resource Type	Existing	Updated	New	Workboo
1	Introduction to Environmental Governance	Environment		May, 2019		
2	Environmental Management Plan Preparation	Environment		May, 2019		
3	Land Code Community Participation for Environmental Governance	Environment		in progress		
4	Operations and Maintenance of Reserve Lands	Environment	Not Started			
5	Environmental Inspection and Reporting	Environment	Not Started			
6	Introduction to Environmental Protection	Environment	Not Started			
7	Environmental Site Assessment	Environment	Not Started			
8	Sources of Contaminants Requiring Management	Environment	Not Started			
9	Federal- Provincial Environmental Protection Law	Environment	Not Started			
10	Considerations in Developing an Environmental Protection Regime	Environment	Not Started			
11	Introduction to Environmental Assessment	Environment	Not Started			
12	Preparing to Develop an EA Regime	Environment	Not Started			
13	Creating an Effective EA Regime	Environment	Not Started			
14	Federal and Provincial EA Processes	Environment	Not Started			
15	Introduction to CRP	Developmental	Not Started			
16	Options for Community Approval Process	Developmental	Not Started			
17	Pre Vote Procedures under the CRP	Developmental	Not Started			
18	Vote Procedures under the CRP	Developmental	Not Started			
19	Introduction to the Framework Agreement	Developmental	Not Started			
20	Principles of the Framework Agreement	Developmental	Not Started			
21	Individual Agreement	Developmental	Not Started			
22	Conducting and Managing Surveys under the Land Code	Surveys	Not Started			
23	Introduction to Planning	Land Planning	Not Started			
24	Dispute Resolutions	Law & Policy	Not Started			
25	Introduction to CBTPD Strategy	Operational	Not Started			
26	Introduction to the Developmental Phase	Developmental	Not Started			
26	Introduction to the Developmental Phase	Developmental	Not Started			
27	Implementation Document for Parts I & II of the Framework Agreement	Developmental	Not Started			
28	Introduction to CHR	Culture & Heritage	Not Started			
29	CHR: Traditional Information & Traditional Practices	Culture & Heritage	Not Started			
30	CHR: Applicable Laws and Regulations	Culture & Heritage	Not Started			
31	Developing a Regime for CHR	Culture & Heritage	Not Started			
32	First Nation Resource Management and Planning	Natural Resources	Not Started			
33	Resource Management and Planning for water	Natural Resources	Not Started			
34	Laws Affecting Water and Planning	Natural Resources	Not Started			
35	Creating a Water Management Regime	Natural Resources	Not Started			
36	Resource Management and Planning for Forests	Natural Resources	Not Started			
37	Creating a Forest Management Plan	Natural Resources	Not Started			
38	Resource Management and Planning for Minerals and Aggregates	Natural Resources	Not Started			
39	An Introduction to Law Enforcement	Law & Policy		Mar-19	Jun-19	
40	Land Use Planning 101: Introduction and Process	Land Planning		Apr-19	Jun-19	
41	Land Use Planning 102: Ethics and Assistance	Land Planning		Apr-19	Jun-19	
42	Solid Waste Management: Municipal Type Agreement	Environment		in progress		
43	An Introduction to Solid Waste Management	Environment		in progress		
44	Solid Waste Management: Compliance & Enforcement	Environment		in progress		

TMPD Knowledge Paths

1. Professional Practice Reflections
2. Identification of Learning Needs
3. Establishment of Land Governance Knowledge Goals
4. My goals are related to the following knowledge paths
5. What types of Knowledge activities could assist me in achieving the goals I have set?

Knowledge Portal

DIGITAL LEARNING PORTAL

Signatory Login

LOGIN DETAILS

Email

Password

SIGN IN »

[Forgot Password?](#)

Knowledge Path Activity

Description of Knowledge Path Activity*

Year to Apply Activity to*

Activity Date*

Learning Units*

Learning Unit Type*

The final date for reporting Knowledge Path Activities f

CANCEL

SAVE

LAND GOVERNANCE MANUAL

A Guide to Best Practices for Land Governance

A resource tool for Operational First Nations
under Framework Agreement on First
Nation Land Management

GET STARTED 

-  BACKGROUND
-  LAND GOVERNANCE AUTHORITY
-  OPERATIONAL START UP
-  FIRST NATION LAND REGISTRY
-  LAND REGISTRY CHECKLISTS & PROCEDURES
-  INDIVIDUAL LAND INTERESTS / ALLOTMENTS
-  TRADITIONAL LAND HOLDINGS
-  LANDS INVENTORY & FILE MANAGEMENT
-  MAPPING (GIS)
-  LAND USE PLANNING
-  WEBSITE DEVELOPMENT
-  LAND LAW, REGULATION & POLICY
-  SURVEYS & RELATED DOCUMENTS
-  NATURAL RESOURCES
-  ENVIRONMENT
-  WILLS & ESTATES
-  KNOWLEDGE SHARING



WE ARE... ▾

I AM A... ▾

FRAMEWORK AGREEMENT

GOVERNANCE TOOLS ▾

DISCOVER ▾

EVENTS ▾

CONTACT US

FRAMEWORK AGREEMENT

FIRST NATION PROFILE PAGES

LAND GOVERNANCE AUTHORITY ▾

LAND LAW DEVELOPMENT ▾

FIRST NATION LAND REGISTRY ▾

LAND INTERESTS ▾

LAND SURVEYS ▾

LAND USE PLANNING ▾

CULTURAL, HERITAGE & TRADITIONAL USE

NATURAL RESOURCES

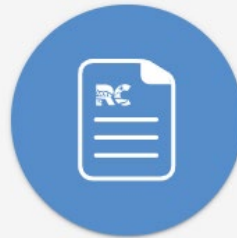
ENVIRONMENT

ONLINE COURSES

LANDS GOVERNANCE
MANUAL

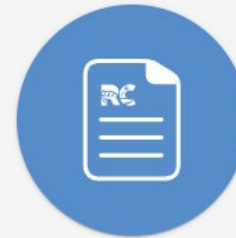
TRAINING

RESOURCES



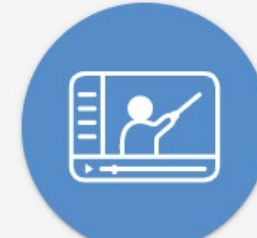
Land Registry Forms

These samples have been developed by operational First Nations and designed to be...



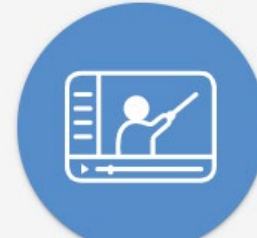
Land Registry

The following samples that have been developed by operational First Nations. You...



Environmental Protection (EP)

Introduction to Environmental Protection & Management...



Environmental Governance

Introduction to Environmental Governance & Planning...



First Nations Land Management Resource Centre @FNL MRC



FIRST NATIONS LAND MANAGEMENT RESOURCE CENTRE



Penelakut Tribe
Penelakut Island, British Columbia



636 hectares
961 members

Voted YES to the Penelakut Tribe Tumuhw Code on December 18, 2019

Congratulations on becoming the 94th Framework Agreement signatory to regain lands governance through land code!

THE FRAMEWORK AGREEMENT ON FIRST NATION LAND MANAGEMENT

GET THE FACTS!
www.labrc.com

FAST FACTS

SECTION 7.2: Every person who is a First Nation member, whether resident on or off-reserve, who is at least 18 years of age, is eligible to vote on their First Nation's proposed land code and its individual agreement.



FIRST NATIONS LAND MANAGEMENT RESOURCE CENTRE

The Framework Agreement on First Nation Land Management

SIGNATORIES IN THE NEWS!



MEMBERTOU BECOMES PARTNER IN SYDNEY CONTAINER TERMINAL PROJECT BY HOLLY CONNERS

www.labrc.com

Direct Community Support

Implementation & Workshops



Lands Dept Staff



Lands Advisory
Committee

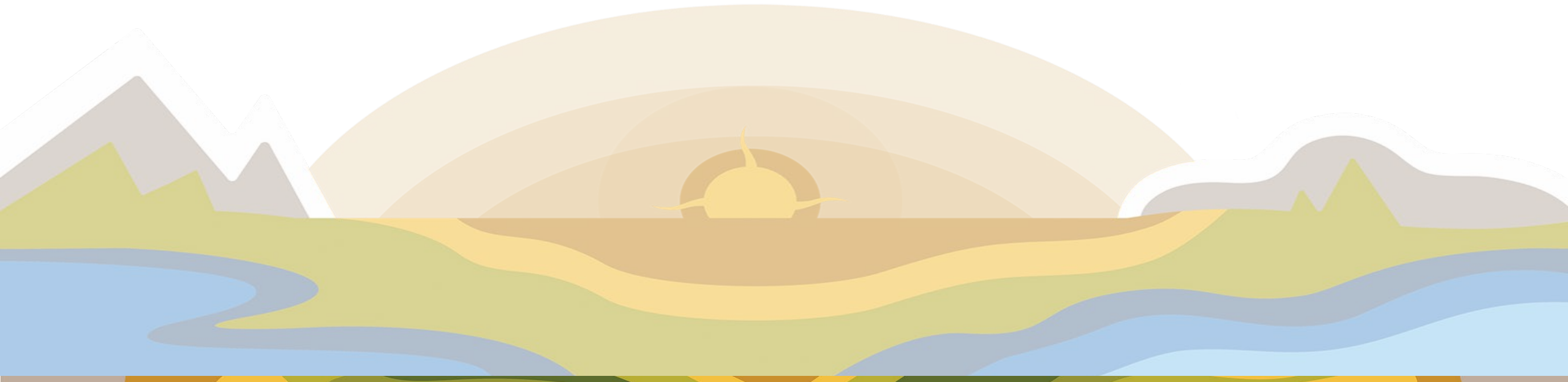


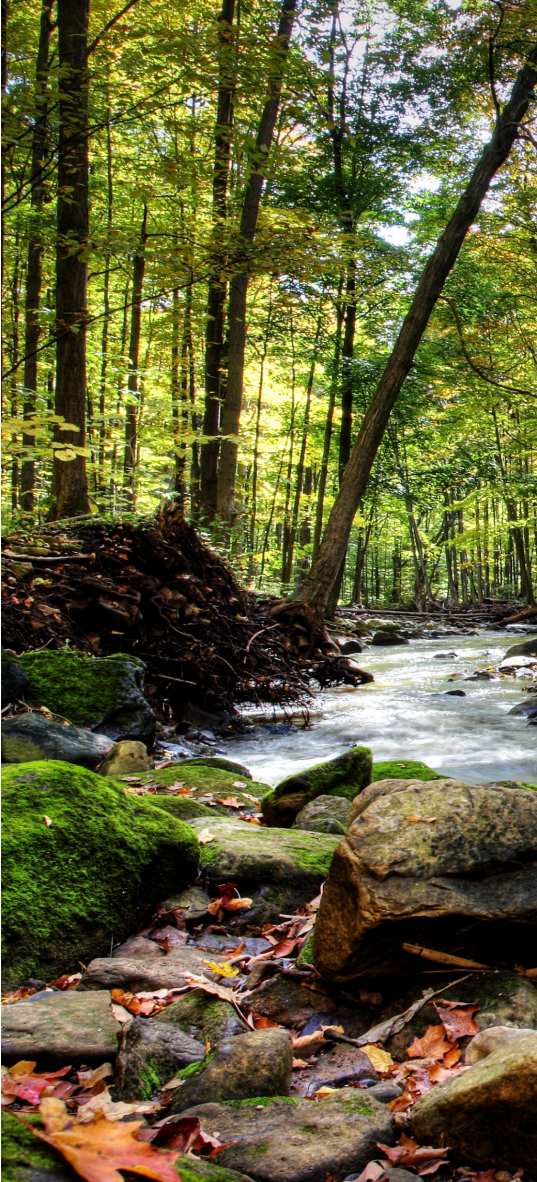
Chief & Council



Membership

Questions & Discussion





**FIRST NATIONS
LAND MANAGEMENT
RESOURCE CENTRE**

THANK YOU!

Angie Derrickson

*Manager: Training, Mentorship &
Professional Development*

c. 250-469-1675

e. aderrickson@labrc.com

w. labrc.com

