

VIRTUAL WEBINAR

Impacts COVID 19 – Part 2 Emergency Planning

Thu, May 21st 2020

9:30 AM (PST) – 60 minutes



**T M
P D**

Training,
Mentorship, &
Professional
Development



Angie Derrickson

Manager, Training, Mentorship
& Professional Development

TMPD Virtual Webinar Welcome



TMPD Virtual Webinar Guidelines



Some administrative details to enhance the Webinar session:

1. Mute all your devices
2. Recording in Progress
3. SLIDO Questions, Comments, Closing Poll



A white rounded rectangle with a green border. On the left is a grey icon of two people with speech bubbles. To the right of the icon, the text "SLIDO.com" is written in a large, bold, black font, and "#TMPD-MAY-21" is written below it in a smaller, bold, black font.





1. Virtual Webinar Questions
2. TMPD Signatory Impacts Survey

Connect laptop & mobile device to:

Website-App
Event Code

www.sli.do
[#TMPD-MAY-21](https://twitter.com/TMPD-MAY-21)



Presentation & Materials

are available online: www.labrc.com/event





Impacts COVID 19 – Part 2 – Emergency Planning

- ❖ Emergency Management
- ❖ Planning Considerations
- ❖ Legal Considerations
- ❖ Community Approaches



TMPD Virtual Webinar Presenters



Stephen McGlenn
Specialist, Land Use
Planning & Curriculum
Delivery



Membertou
Peter Stevens



Kevin Broughton
Enforcement Advisor – East



Muskoday
Dean Bear

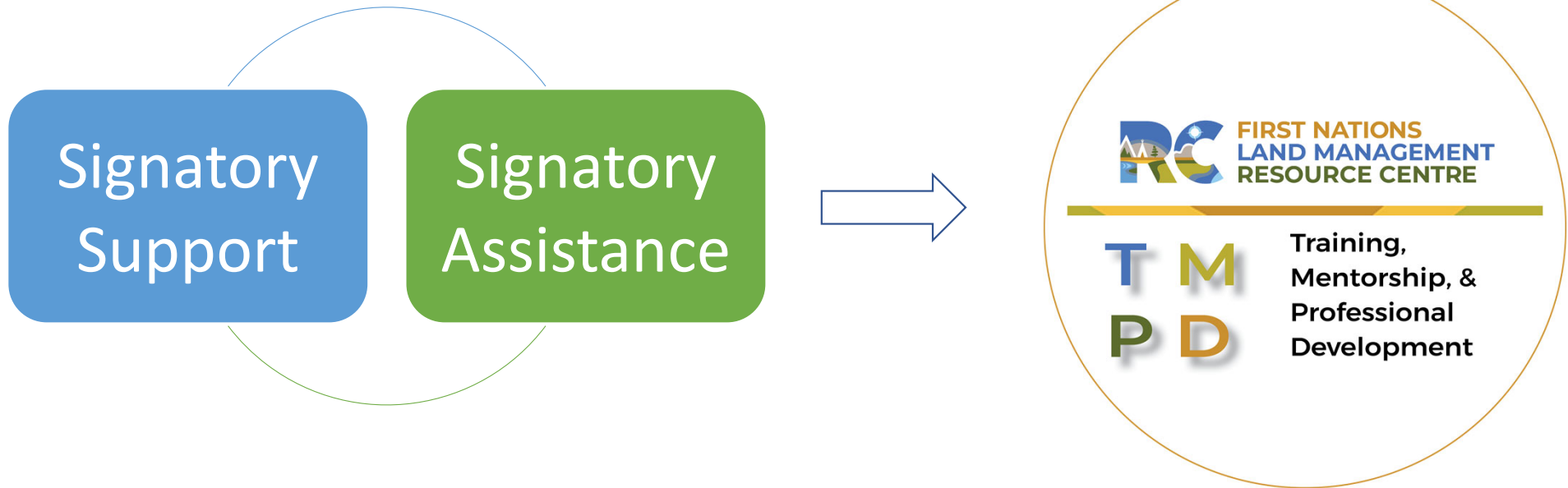


Daniel Millette
Director, Planning and
Readiness



Tzeachten
Deanna Honeyman

Framework Agreement



“Supporting First Nations to exercise their Inherent Right to govern their Lands and Resources.”



Introduction to Emergency Management Planning



Emergency Management is the organization of people and management of resources and responsibilities when dealing with emergencies.

It is composed of 4 components:

- Mitigation/Prevention
- Preparedness
- Response
- Recovery



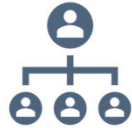
Key Terms

All-Hazards is an integrated approach to emergency management focused on developing capacities and capabilities that are critical to preparedness for a full spectrum of emergencies or disasters.

All-hazards does not mean you are planning for everything that can go wrong in your community. Instead, all-hazard planning means:



Capacity building
within your
community's context



Organizational
Response to any
Emergency



Procedures, roles &
responsibilities (EOC)



Training Plan that is
Scalable



Aligns with other
jurisdictions



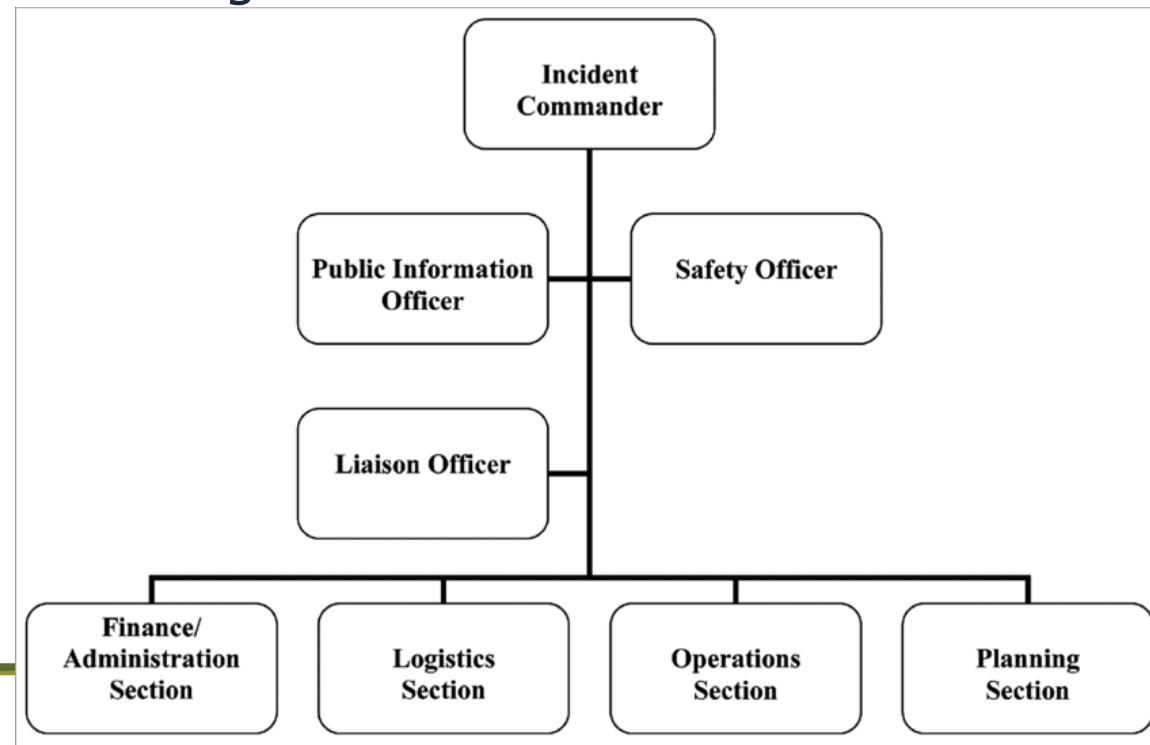
Key Terms

Disaster resilience refers to a community's ability to anticipate, and where possible, prevent or at least minimize the potential damage a disaster might cause. It involves how well a community can cope with the effects of a disaster if it occurs, to maintain certain basic functions and structures during the disaster, and to recover and adapt to the changes that result.



Key Terms

Incident Command (IC) is a standardized command and control system used on the site of an emergency to manage incidents and emergency-related training events.



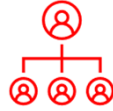
Common Elements in Emergency Planning



Governance



Formal Emergency Management Program



Emergency Management Program Coordinator



Emergency Management Committee



Authorities & Jurisdictions (e.g. Land Code & FN Law)



Amendment Record

Preparedness



Hazard, Risk & Vulnerability Assessment



Training Plan



Communications Plan



Address List



Elders, Pets & Special Needs

Mitigation & Prevention



Community Risk Profile



Inventory and emergency supplies



Integrate with LUP, EMP, CCP



Exercises

Response & Recovery



Emergency Operations Centre



Access & Egress Maps



Hazard Specific Response Guidelines



Checklists, forms and templates



Short and Long-term Recovery Planning



Planning & Legal Considerations

Things to consider when designing an Emergency Management Planning Process:

- Unique challenges on-reserve
- What do we mean when you declare an “Emergency”?
- [JIBC - Aboriginal Disaster Resilience Planning](#)
- Form a planning team with committees and working groups
- Commit to a training plan, annual exercises
- Distribute the Plan! Leadership, community, redacted versions for relevant agencies
- EOC members always carry a copy of the plan (USB stick on keychain)
- Whole of Organization approach - Buy-in from all depts., administration & leadership



Planning & Legal Considerations

Resilience is achieved when **everybody** is involved in the emergency planning process!

Leadership

- Vision
- Oversight & Direction
- Participation
- Accountability
- Engagement
- Political Support/Mutual Aid requests
- Public/Media Relations

RESILIENCE

Staff driven

- All departments and all staff
- Community Engagement
- Developing & Implementing Policy
- Delivering programs
- Business Continuity

Administration

- Policy & Planning
- EM/DR Embedded in Job descriptions
- Form Committees
- Annual Reporting
- Communication
- Training

Community

- Individuals
- Households
- Families
- Neighborhoods



Planning & Legal Considerations

- Rooting Emergency Planning in your Land Code authority through a Land Code Law 
- Understanding Jurisdictions and Authorities, agreements between ISC + Provinces
- Provincial/Federal jurisdiction, responsibilities
 - Liabilities & Expectations, challenges
 - Training courses & Support EG of Online Training in Exercise Design
(<https://www.emergencymanagementontario.ca/english/emcommunity/professionaldevelopment/Training/em125/em125.html>)
- Introduce next webinar on Developing and Emergency Law 



Integrating Emergency Management into other Planning Processes

Emergency
Planning

Environmental
Planning

Land Use
Planning

Climate Change

Traditional
Knowledge

How might Pandemics affect plans, planning and policy?

- How we plan
- How we engage community
- Street and transit design
- Assembly uses
- Building design
- Parks
- Office space
- Residential work spaces



Community Approaches Panel

1. Can you provide an example of a success and a challenge that your community has faced in Emergency Management?
2. What best practices can you share when it comes to Emergency Management?
3. What kind of support would you like to see from the Resource Centre on Emergency Management?



Membertou - East



Muskoday - Prairies



Tzeachten - West

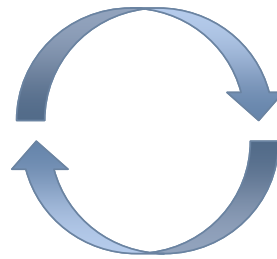




Virtual Networking



SLIDO.com
#TMPD-MAY-21



Raise you hand



Unmute Yourself



Turn Video On



Session Recorded



Impacts COVID 19 Webinar Series



IMPACTS COVID 19 – PART 3 - EMERGENCY LAW DEVELOPMENT

Jun 4, 2020



IMPACTS COVID 19 – PART 4 - TBD

Jul 30, 2020



IMPACTS COVID 19 – PART 5 - TBD

Oct 22, 2020



2020 Virtual Webinar Schedule



Training, Mentorship & Professional Development

TMPD Virtual Webinar & Workshop 2020 Schedule

VIRTUAL WEBINARS 2020		Save the Date
1.	TMPD Strategy Update & Technical Needs Survey	Apr 23
2.	Impacts COVID 19 – Part 1 – Signatory Impacts & RC Support	May 7
3.	Impacts COVID 19 – Part 2 – Emergency Planning	May 21
4.	Impacts COVID 19 – Part 3 – Emergency Law Development	Jun 4
5.	First Nation Hub for Land Governance Planning – Updated Strategy	Jun 18
6.	GIS Needs Assessments	Jul 2
7.	Community Engagement (techniques, online tools, data collection)	Jul 16
8.	Impacts COVID 19 – Part 4 – TBD	Jul 30
9.	Framework Agreement Background	Aug 13
10.	Matrimonial Real Property Laws under Land Code, NALMA-COEMRP Partnership	Aug 27
11.	Mines and Minerals, Oil and Gas, Surface Access – Title & OIC	Sep 10
12.	Planning, Planning Types and Integrated Planning	Sep 24
13.	Property Transfer Tax, TULO Partnership (Tzeachten Case Study)	Oct 8
14.	Impacts COVID 19 – Part 5 – TBD	Oct 22
15.	Lands Advisory Board – Annual General Meeting	Oct 27-28
16.	Different meanings of Consultation & Engagement across Canada	Nov 5
17.	ATR/TLE, TULO Partnership (Brokenhead Case Study)	Nov 19
18.	Individual Agreement – Roles, Responsibilities & Expectations	Dec 3
19.	Historical Treaties	Dec 17





T M
P D

**Training,
Mentorship, &
Professional
Development**

THANK YOU!

Angie Derrickson
TMPD Manager

c. 250-469-1675

e. aderrickson@labrc.com

 LABRC.com

 ResourceCentre_TMPD

 @FNL MRC