



**FIRST NATIONS  
LAND MANAGEMENT  
RESOURCE CENTRE**



**Training,  
Mentorship, &  
Professional  
Development**

# **VIRTUAL WEBINAR**

## **TMPD Strategy Update**

Thu, April 23<sup>rd</sup> 2020

9:30 AM (PST) – 45 minutes



# TMPD Virtual Webinar Guidelines

Some administrative details to enhance the Webinar session:

1. Mute all your devices
2. Recording in Progress
3. SLIDO Questions, Comments, Closing Poll



# TMPD Virtual Webinar Tools



1. Virtual Webinar Questions
2. TMPD Virtual Networking Survey

Connect laptop & mobile device to:

Website-App  
Event Code

[www.sli.do](https://www.sli.do)  
[#TMPD-APR-23](#)



## Presentation & Materials

are available online: [www.labrc.com/event](https://www.labrc.com/event)

# Objectives

## TMPD Strategic Update

- Provide an overview on the updated TMPD Strategy
- Ongoing RC Support Services available to FA communities
- Introduction to Knowledge Paths Tool
- 2020 Virtual Webinar & Workshop Schedule

# TMPD Virtual Webinar Presenters



**Angie Derrickson**

**Manager, Training, Mentorship & Professional Development**



**Daniel M. Millette**

**Director, Planning and Readiness**

# Framework Agreement



*“Supporting First Nations to exercise their Inherent Right to govern their Lands and Resources.”*

# Land Governance Activities



**Governance**



**Compliance**



**Management**



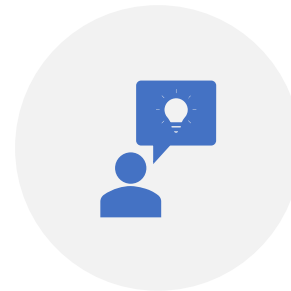
**VIRTUAL WEBINARS  
& WORKSHOPS**



**ONLINE COURSES**



**LAND GOVERNANCE  
MANUAL**



**KNOWLEDGE  
REPOSITORY**



**DIRECT COMMUNITY  
SUPPORT 1:1**

**TMPD**  
Strategy



WE ARE... ▾

I AM A... ▾

FRAMEWORK AGREEMENT

**GOVERNANCE TOOLS ▾**

DISCOVER ▾

EVENTS ▾

CONTACT US

LANDS GOVERNANCE  
MANUAL**TRAINING**

RESOURCES

Workshops

Online Courses

Land Governance Manual

Knowledge Repository

Direct Community Support

## Workshops

RC continues to work towards providing future training and Lands Governance capacity development under the Framework Agreement. Audiences will be advised as workshops and courses become available.

- Information Workshops – these sessions are intended to deliver general information and updates on specific topics that are of interest to our managers, directors and communities
- Learning Workshops – where knowledge is directly delivered by selected experts in the subject matter



WE ARE... ▾

I AM A... ▾

FRAMEWORK AGREEMENT

GOVERNANCE TOOLS ▾

DISCOVER ▾

EVENTS ▾

CONTACT US

LANDS GOVERNANCE  
MANUAL

TRAINING

RESOURCES

Workshops

Online Courses

Land Governance Manual

Knowledge Repository

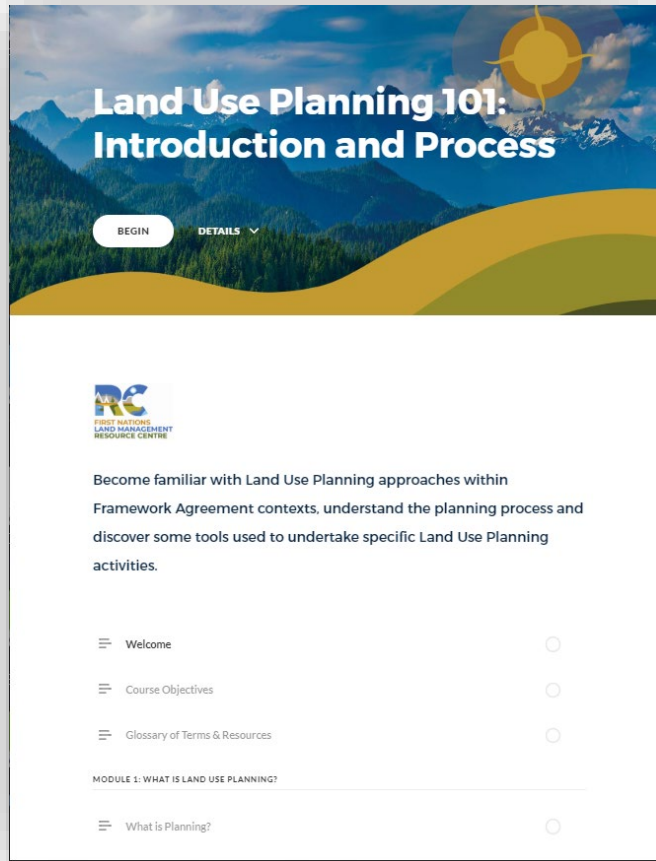
Direct Community Support

## Online Courses

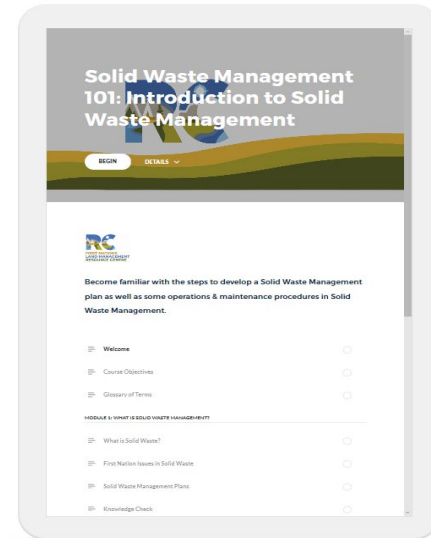
**Online Courses** are short courses that have been created on topics that are informed by the key functions of a Lands Governance Director, Lands Manager or other Lands related staff operating under the Framework Agreement. These courses also have a supporting Workbook, presentation and supplemental resources that can be used in webinars, workshops and individual learning. Courses are reviewed and updated periodically as laws and other content changes come into effect. There are presently over 50 online courses available, with several additional ones in development.

# Online Course – Multiple Viewers

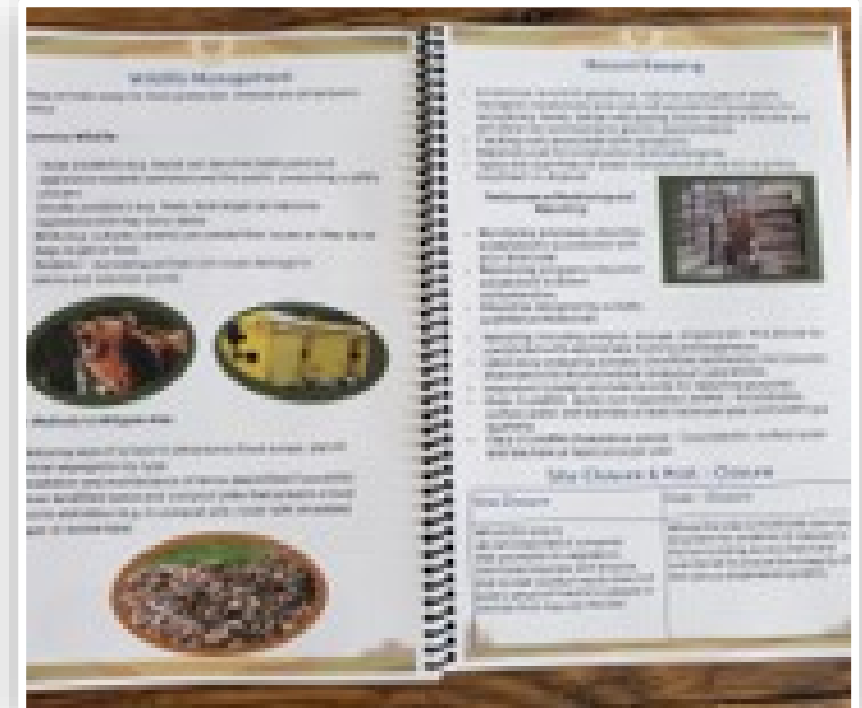
Desktop



Tablet



Workbook



Smart Phone



# Online Course – Knowledge Checks



## Knowledge Check

Author Hidden ▾

Please answer the (4) questions below:

A Municipal Type Service Agreement is an agreement made only between a First Nation and a private contractor.

- ☐ True
- ☐ False

SUBMIT

Practice your understanding of materials

- ☐ True / False
- ☐ Multiple-Choice

Contact us if there are any knowledge gaps

# Online Course – Tracking

Workbooks

New

Updated

Course Tracking Sheet

#	Course Name	Resource Type	Existing	Updated	New	Workbook
1	Introduction to Environmental Governance	Environment		May, 2019		
2	Environmental Management Plan Preparation	Environment		May, 2019		
3	Land Code Community Participation for Environmental Governance	Environment		in progress		
4	Operations and Maintenance of Reserve Lands	Environment	Not Started			
5	Environmental Inspection and Reporting	Environment	Not Started			
6	Introduction to Environmental Protection	Environment	Not Started			
7	Environmental Site Assessment	Environment	Not Started			
8	Sources of Contaminants Requiring Management	Environment	Not Started			
9	Federal- Provincial Environmental Protection Law	Environment	Not Started			
10	Considerations in Developing an Environmental Protection Regime	Environment	Not Started			
11	Introduction to Environmental Assessment	Environment	Not Started			
12	Preparing to Develop an EA Regime	Environment	Not Started			
13	Creating an Effective EA Regime	Environment	Not Started			
14	Federal and Provincial EA Processes	Environment	Not Started			
15	Introduction to CRP	Developmental	Not Started			
16	Options for Community Approval Process	Developmental	Not Started			
17	Pre Vote Procedures under the CRP	Developmental	Not Started			
18	Vote Procedures under the CRP	Developmental	Not Started			
19	Introduction to the Framework Agreement	Developmental	Not Started			
20	Principles of the Framework Agreement	Developmental	Not Started			
21	Individual Agreement	Developmental	Not Started			
22	Conducting and Managing Surveys under the Land Code	Surveys	Not Started			
23	Introduction to Planning	Land Planning	Not Started			
24	Dispute Resolutions	Law & Policy	Not Started			
25	Introduction to CBTDP Strategy	Operational	Not Started			
26	Introduction to the Developmental Phase	Developmental	Not Started			
26	Introduction to the Developmental Phase	Developmental	Not Started			
27	Implementation Document for Parts I & II of the Framework Agreement	Developmental	Not Started			
28	Introduction to CHR	Culture & Heritage	Not Started			
29	CHR: Traditional Information & Traditional Practices	Culture & Heritage	Not Started			
30	CHR: Applicable Laws and Regulations	Culture & Heritage	Not Started			
31	Developing a Regime for CHR	Culture & Heritage	Not Started			
32	First Nation Resource Management and Planning	Natural Resources	Not Started			
33	Resource Management and Planning for water	Natural Resources	Not Started			
34	Laws Affecting Water and Planning	Natural Resources	Not Started			
35	Creating a Water Management Regime	Natural Resources	Not Started			
36	Resource Management and Planning for Forests	Natural Resources	Not Started			
37	Creating a Forest Management Plan	Natural Resources	Not Started			
38	Resource Management and Planning for Minerals and Aggregates	Natural Resources	Not Started			
39	An Introduction to Law Enforcement	Law & Policy		Mar-19	Jun-19	
40	Land Use Planning 101: Introduction and Process	Land Planning		Apr-19	Jun-19	
41	Land Use Planning 102: Ethics and Assistance	Land Planning		Apr-19	Jun-19	
42	Solid Waste Management: Municipal Type Agreement	Environment		in progress		
43	An Introduction to Solid Waste Management	Environment		in progress		
44	Solid Waste Management: Compliance & Enforcement	Environment		in progress		



## Learner Login

### KNOWLEDGE PATHS

Lands Governance Under Framework Agreement



## Introduction – Knowledge Perspectives

## Knowledge Activities

### Profile

First Name:

### Goals

Land Governance  
Professional  
Reflections

Identification of  
Training and  
Professional  
Development Needs

Establishment of  
Land Governance  
Knowledge Goals

My goals are related  
to the following  
knowledge paths

What types of  
Knowledge activities  
could assist me in  
achieving the goals  
I have set?

### Activities

Description of Knowledge Path Activity	Activity Date	Learning Unit Type	Certificate
Lorem ipsum dolor sit amet, consetetur sadipscing	01/01/2019	Workshop	



John Green

Mormonisme du Lac St-Jean  
gros-Mouton et la Première Nation  
des Paléokaribuniens

Introduction

Profile

Goals

Activities

Log Out

WE ARE... ▾

I AM A... ▾

FRAMEWORK AGREEMENT

GOVERNANCE TOOLS ▾

DISCOVER ▾

EVENTS ▾

CONTACT US

LANDS GOVERNANCE  
MANUAL

TRAINING

RESOURCES

Workshops

Online Courses

Land Governance Manual

Knowledge Repository

Direct Community Support

## Land Governance Manual (LGM)

The LGM is a resource tool for Operational First Nations. It provides extensive documentation, process support and guidance. It is available through an electronic [App](#) format for Lands staff to reference as required. It plays a central role in the workshops and webinars and is regularly updated and refined based on First Nation successes, challenges and needs.

# LAND GOVERNANCE MANUAL

## A Guide to Best Practices for Land Governance

A resource tool for Operational First Nations  
under Framework Agreement on First  
Nation Land Management

GET STARTED 

- BACKGROUND
- LAND GOVERNANCE AUTHORITY
- OPERATIONAL START UP
- FIRST NATION LAND REGISTRY
- LAND REGISTRY CHECKLISTS & PROCEDURES
- INDIVIDUAL LAND INTERESTS / ALLOTMENTS
- TRADITIONAL LAND HOLDINGS
- LANDS INVENTORY & FILE MANAGEMENT
- MAPPING (GIS)
- LAND USE PLANNING
- WEBSITE DEVELOPMENT
- LAND LAW, REGULATION & POLICY
- SURVEYS & RELATED DOCUMENTS
- NATURAL RESOURCES
- ENVIRONMENT
- WILLS & ESTATES
- KNOWLEDGE SHARING





WE ARE... ▾

I AM A... ▾

FRAMEWORK AGREEMENT

GOVERNANCE TOOLS ▾

DISCOVER ▾

EVENTS ▾

CONTACT US

FRAMEWORK AGREEMENT

FIRST NATION PROFILE PAGES

LAND GOVERNANCE AUTHORITY ▾

LAND LAW DEVELOPMENT ▾

FIRST NATION LAND REGISTRY ▾

LAND INTERESTS ▾

LAND SURVEYS ▾

LAND USE PLANNING ▾

CULTURAL, HERITAGE & TRADITIONAL USE

NATURAL RESOURCES

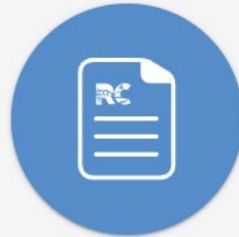
ENVIRONMENT

ONLINE COURSES

LANDS GOVERNANCE  
MANUAL

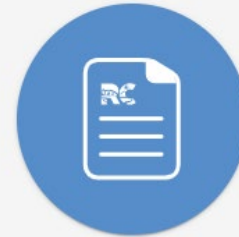
TRAINING

RESOURCES



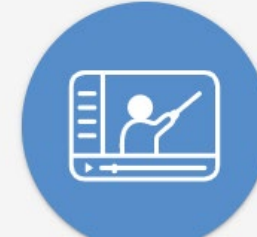
#### Land Registry Forms

These samples have been developed by operational First Nations and designed to be...



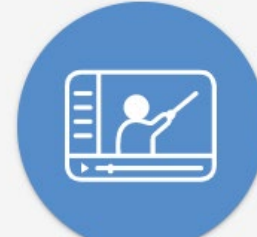
#### Land Registry

The following samples that have been developed by operational First Nations. You...



#### Environmental Protection (EP)

Introduction to Environmental Protection & Management...



#### Environmental Governance

Introduction to Environmental Governance & Planning...

# TMPD Resources

The TMPD strategy is designed to be a tool to assist RC Staff and FA signatories

- ✓ How you can access things
- ✓ How you can help us



[WE ARE... ▾](#)[I AM A... ▾](#)[FRAMEWORK AGREEMENT](#)[GOVERNANCE TOOLS ▾](#)[DISCOVER ▾](#)[EVENTS ▾](#)[CONTACT US](#)[LANDS GOVERNANCE  
MANUAL](#)[TRAINING](#)[RESOURCES](#)[Workshops](#)[Online Courses](#)[Land Governance Manual](#)[Knowledge Repository](#)[Direct Community Support](#)

## Direct Community Support (1:1)



Lands Dept  
Staff



Lands Advisory  
Committee



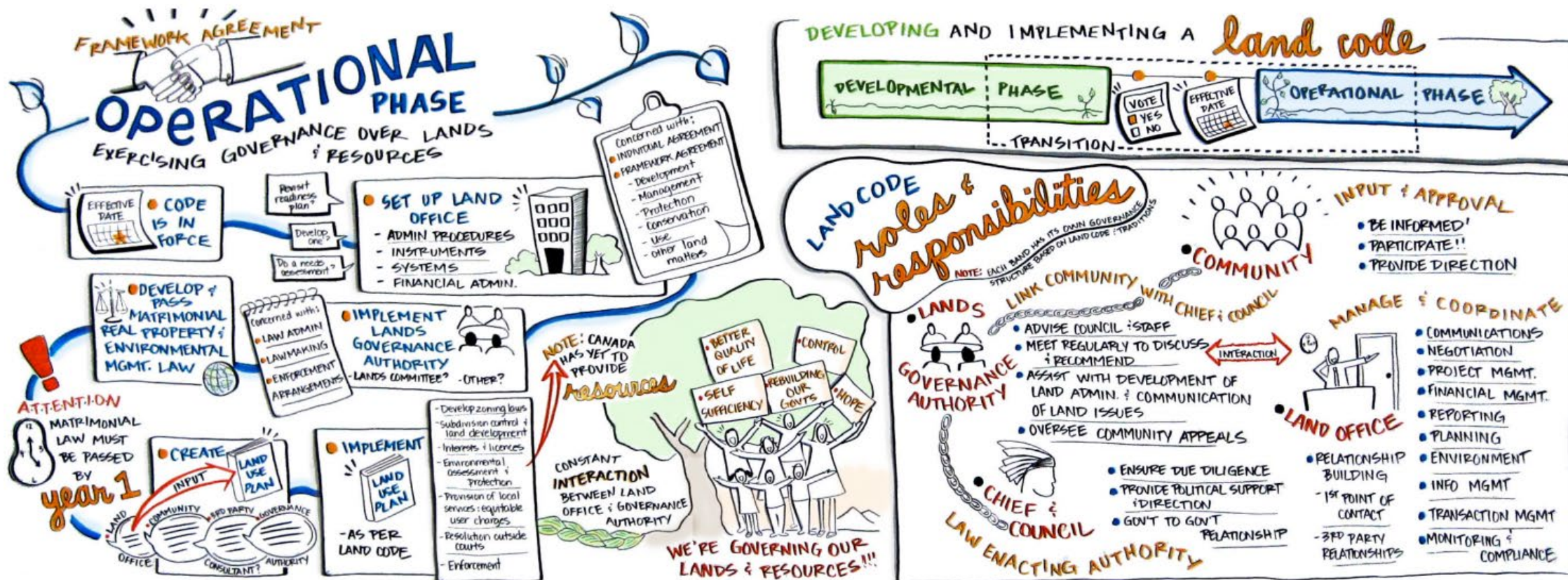
Chief & Council



Membership



# Direct Community Support



# Direct Community Support

## Transition & Implementation

« LGM - Land Governance Manual » FN Shared - Template 2019 »

Authority & Workplan

Budget

Electronic Lands Inventory

Human Resources

Individual Land Interests & Allotments

Land Code & IA

Land Code Workshops - 3rd Party

Land Registry

Lands Committee

Law Development

RC Operational Support

Reference Materials

Surveys

Wills & Estates

# Direct Community Support

## Strategic Work Planning

 [SAMPLE - Land Code Authority Chart.docx](#)

 [SAMPLE - FN Lands Strategic Plan 2017-2020 - Draft v.1.docx](#)

 [FN Land Registry Policy & Procedures - Draft v.1.docx](#)

 [HR - LGO & Staff Responsibilities.docx](#)



WE ARE... ▾

I AM A... ▾

FRAMEWORK AGREEMENT

GOVERNANCE TOOLS ▾

DISCOVER ▾

**EVENTS ▾**

CONTACT US

UPCOMING EVENTS

PAST EVENTS

## UPCOMING EVENTS

## PAST EVENTS

**WEBINAR – Impacts COVID 19 –  
Part 1 – SAVE THE DATE****May 7, 2020 @ 9:30 am PDT**

TMPD VIRTUAL WEBINAR Topic: Impacts COVID 19 – Part 1 –  
Signatory Impacts & RC Support Date: May 7, 2020 Time: 9:30 AM  
(PST) [SAVE THE DATE Notice & Registration \[...\]](#)

[Find out more >](#)**Law Enforcement Workshop –  
NATIONAL****Mar 11, 2020 - Mar 12, 2020**[Google Map](#)

National Law Enforcement Workshop Target Audience:  
Operational & Developmental Signatory First Nations Land  
Governance Directors / Land Managers, Band Managers, Lands  
Committee Members, Enforcement Officers, Youth, Elders This  
learning workshop [...]

[Find out more >](#)

WE ARE... ▾

I AM A... ▾

FRAMEWORK AGREEMENT

GOVERNANCE TOOLS ▾

DISCOVER ▾

EVENTS ▾

CONTACT US

WE ARE...

RC BOARD

STAFF DIRECTORY

LANDS ADVISORY BOARD

**SIGNATORY FIRST NATIONS**

## Signatory First Nations

### Membership Status

Operational ▾

east

✕

Membership Status	First Nation	RC Region
Operational	Algonquins of Pikwakanagan	East
Operational	Anishinaabeg of Naongashiing First Nation	East
Operational	Atikameksheng Anishnawbek	East
Operational	Beausoleil First Nation	East
Operational	Bingwi Neyaashi Anishinaabek	East

### SIGNATORY COMMUNITIES FULL LIST

## Find a Community

Search...



Filter by Province

Filter by Population

Filter by Reserve Size

Filter by Signatory Status





# Virtual Networking



LABRC.com



ResourceCentre\_TMPD



@FNLMRC



Instagram



ResourceCentre\_TMPD

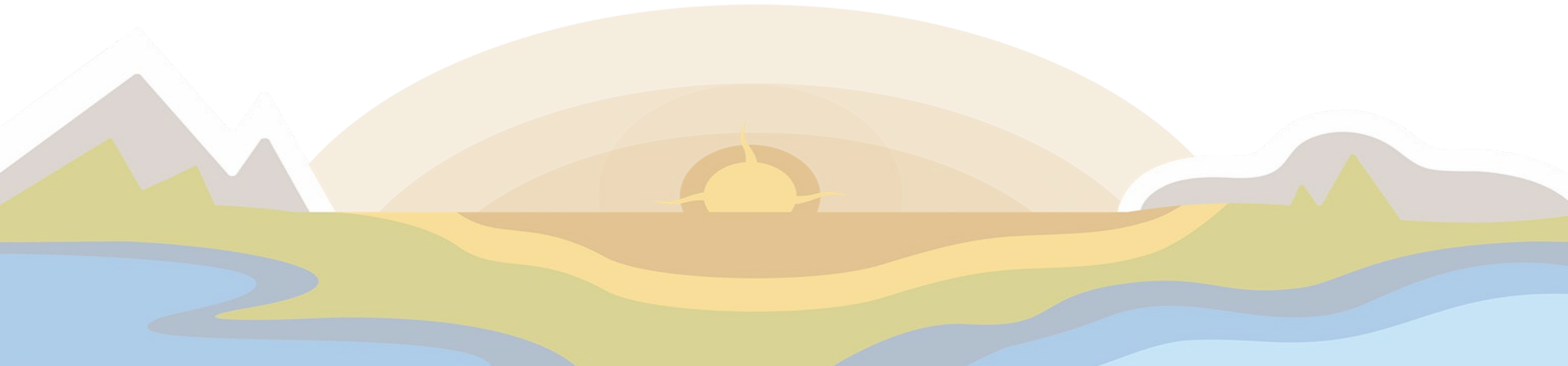


# Questions & Discussion



**SLIDO.com**

**#TMPD-APR-23**





**T M**  
**P D**

**Training,  
Mentorship, &  
Professional  
Development**

**THANK YOU!**

**Angie Derrickson**  
TMPD Manager

c. 250-469-1675

e. [aderrickson@labrc.com](mailto:aderrickson@labrc.com)

w. [labrc.com](http://labrc.com)