

WESTBANK FIRST NATION

LAND USE LAW NO. 2007-01

---

SCHEDULE "C" – SERVICING MAPS

---

**SERVICING MAPS**

Figure 1: IR # 9 Existing & Future Sanitary System .....3

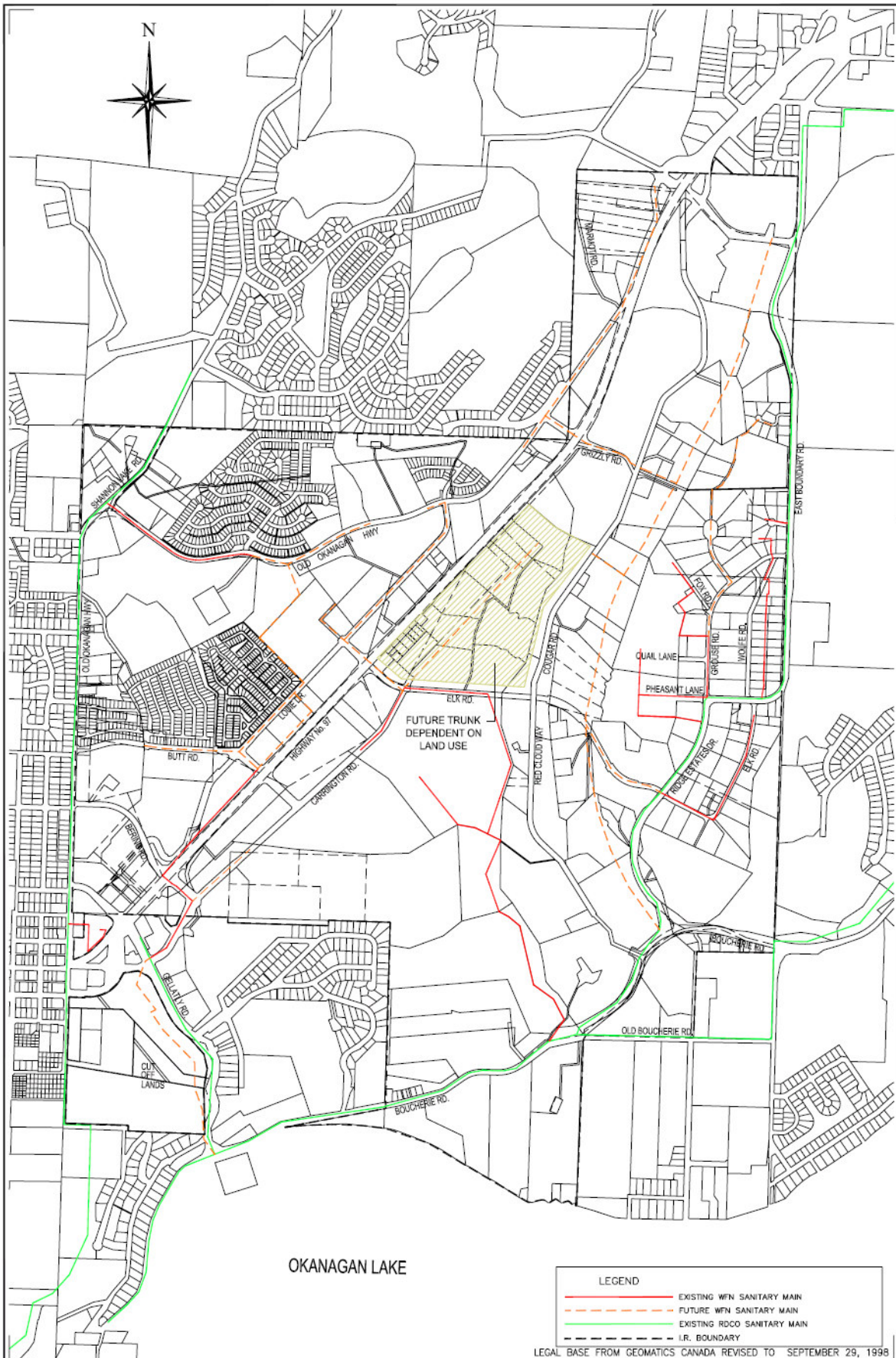
Figure 2: IR # 9 Existing & Future Water Systems.....4

Figure 3: IR # 9 Existing and Future Roads .....5

Figure 4: IR # 10 Existing & Future Sanitary .....6

Figure 5: IR # 10 Existing & Future Water.....7

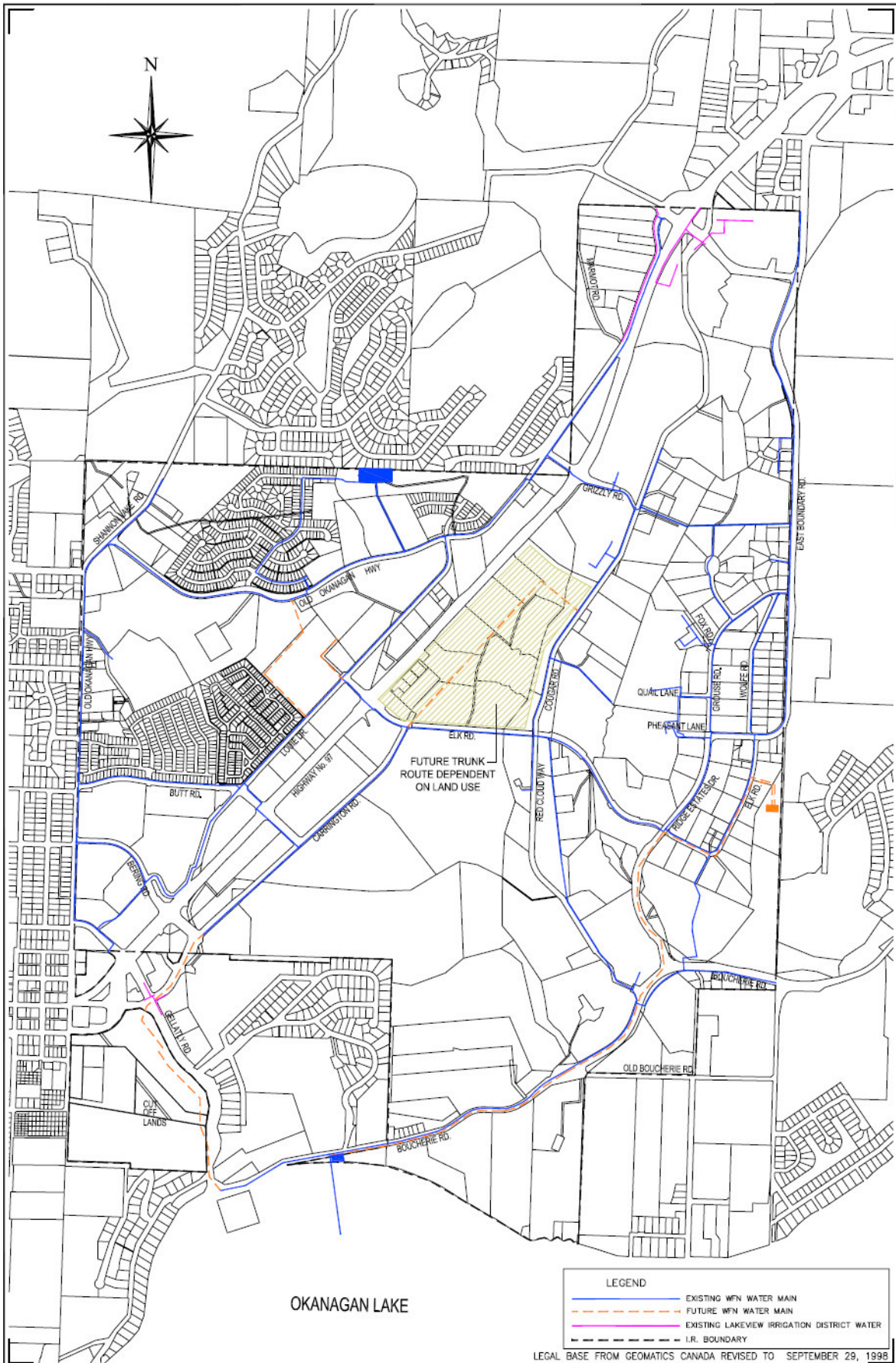
Figure 6: IR # 10 Existing & Future Roads .....8



LEGAL BASE FROM GEOMATICS CANADA REVISED TO SEPTEMBER 29, 1998

<p><b>WESTBANK FIRST NATION</b></p>	<p><b>TSINSTIKEPTUM I.R. No. 9</b> EXISTING &amp; FUTURE SANITARY SYSTEM</p>	<p><b>FIGURE 1</b></p>	
		<p>Date JULY, 2007</p>	<p>USL Job # 0704.49.01</p>
		<p>Drawing # 0704004901</p>	<p>Scale: N.T.S.</p>





LEGEND

- EXISTING WFN WATER MAIN
- - - FUTURE WFN WATER MAIN
- EXISTING LAKEVIEW IRRIGATION DISTRICT WATER
- I.R. BOUNDARY

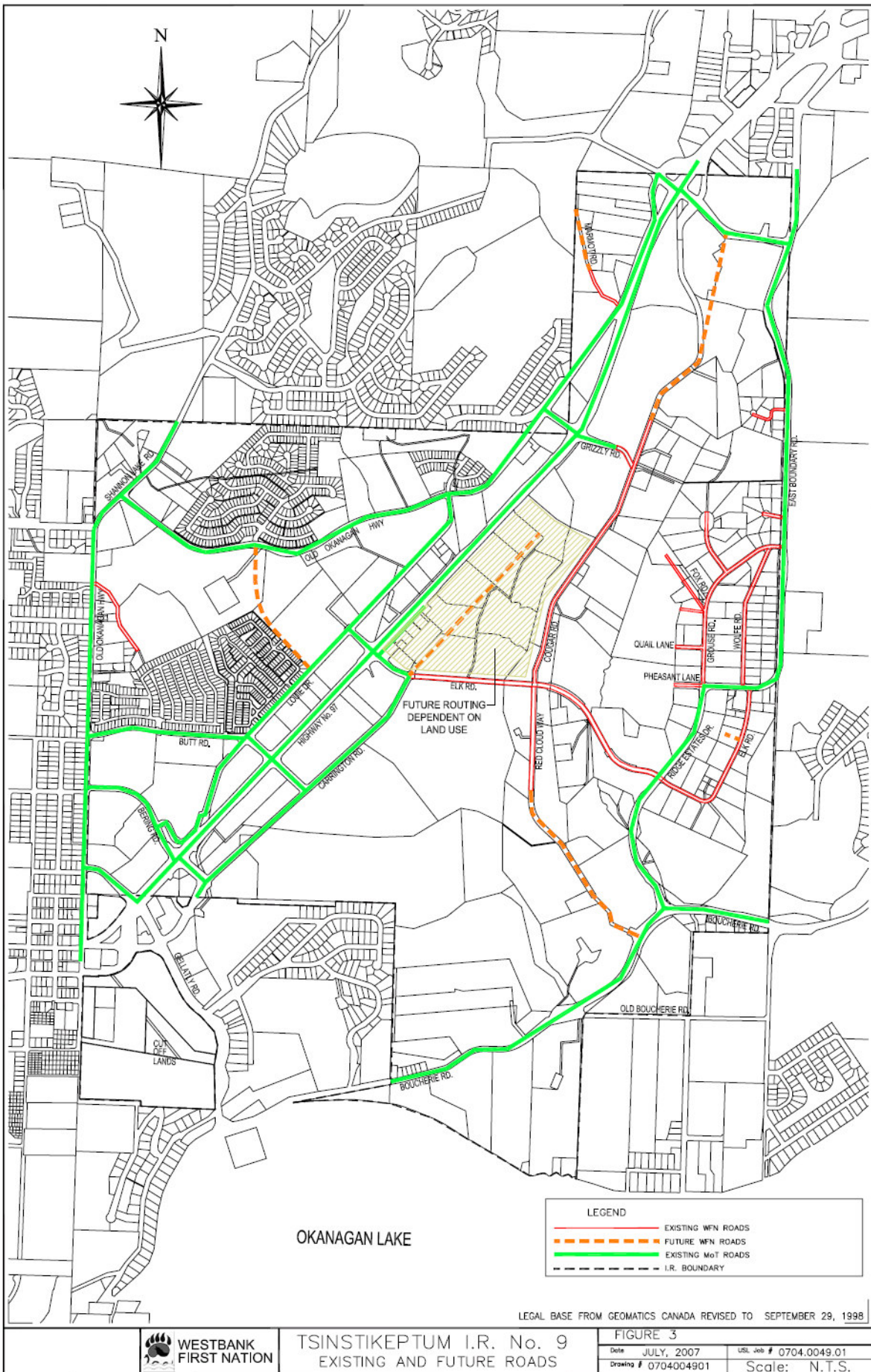
LEGAL BASE FROM GEOMATICS CANADA REVISED TO SEPTEMBER 29, 1998



**TSINSTIKEPTUM I.R. No. 9**  
EXISTING AND FUTURE WATER SYSTEMS

**FIGURE 2**

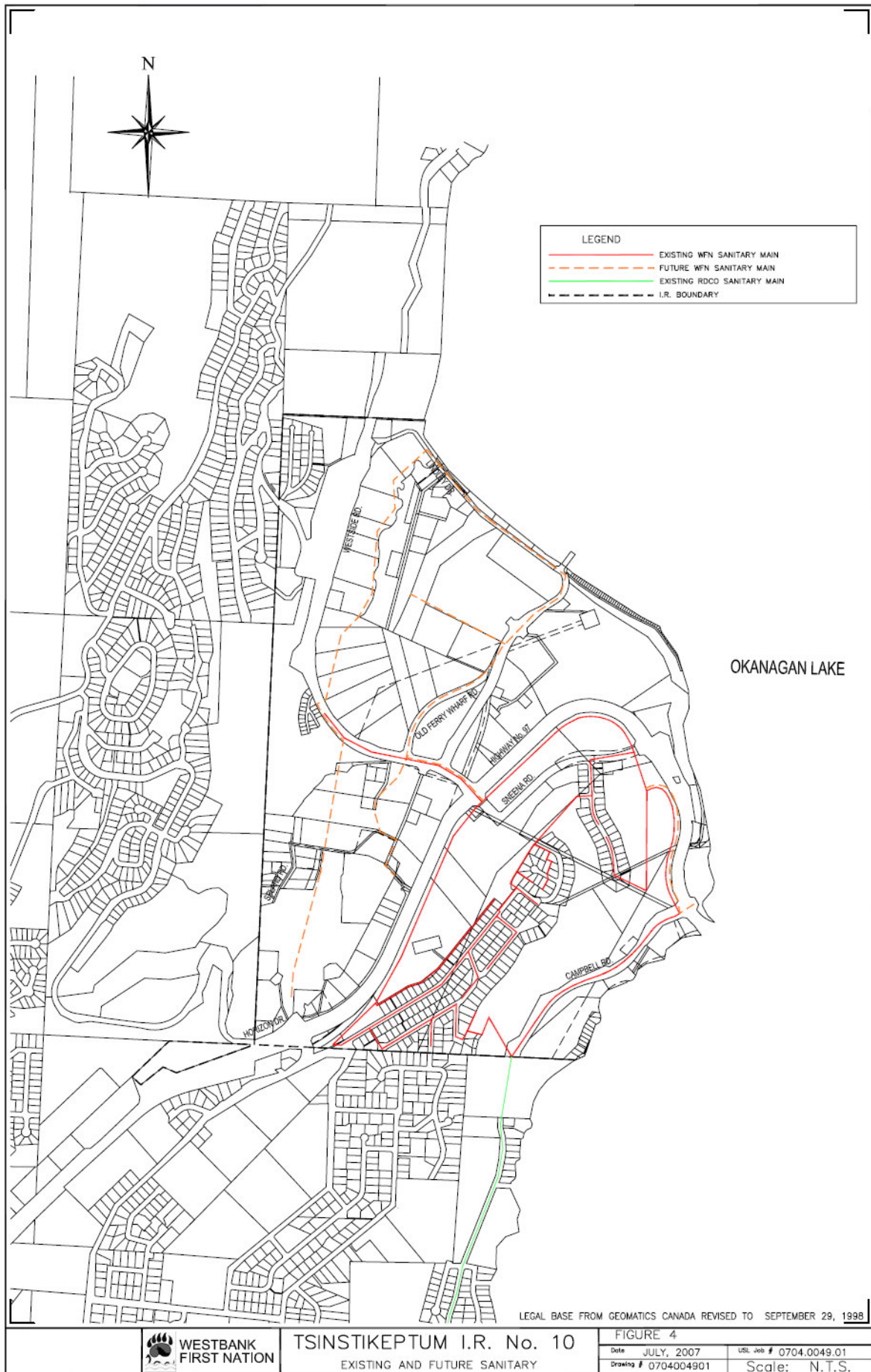
Date	JULY, 2007	USL Job #	0704.0049.01
Drawing #	0704004901	Scale:	N.T.S.

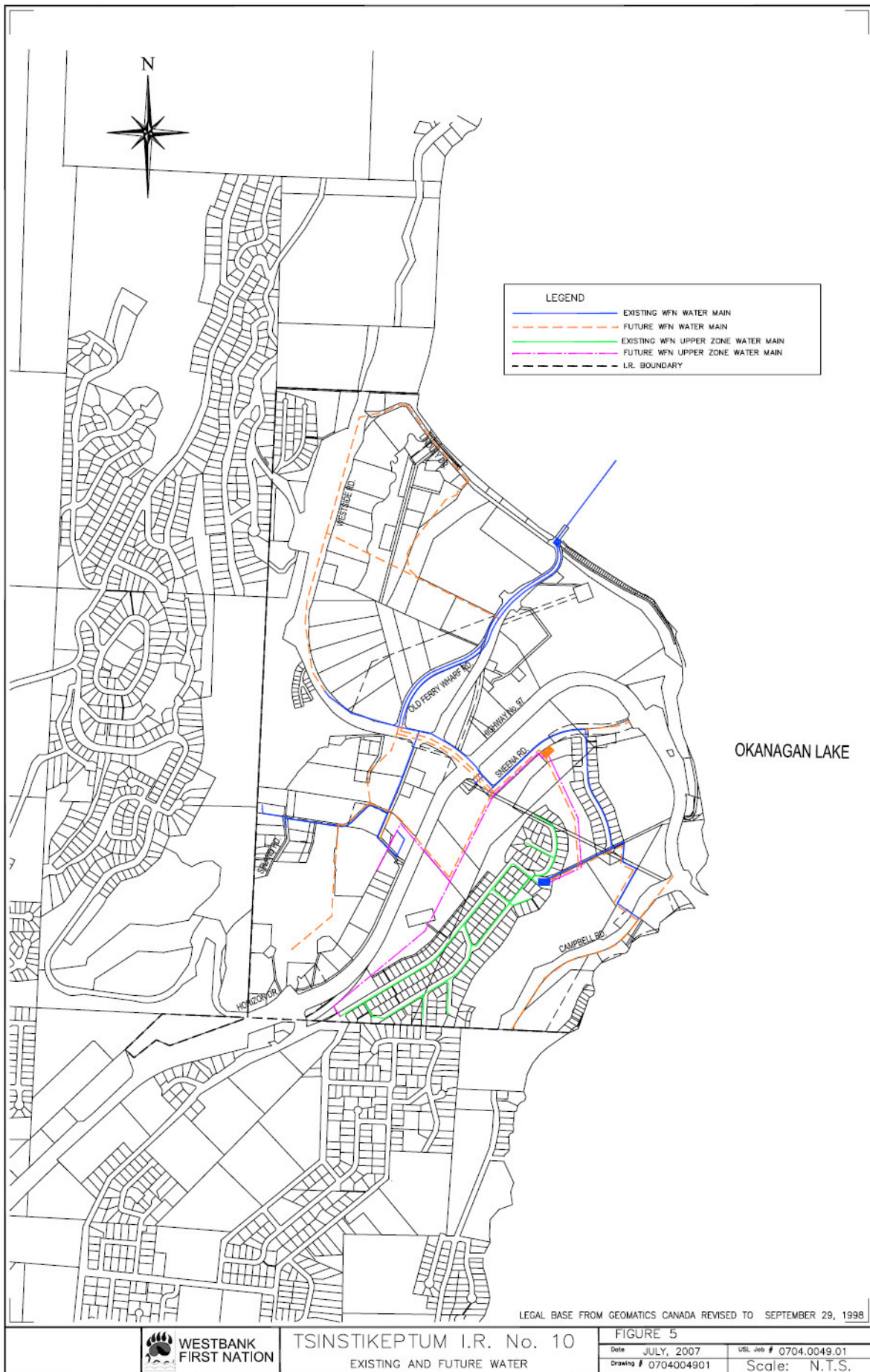


**TSINSTIKEPTUM I.R. No. 9**  
**EXISTING AND FUTURE ROADS**

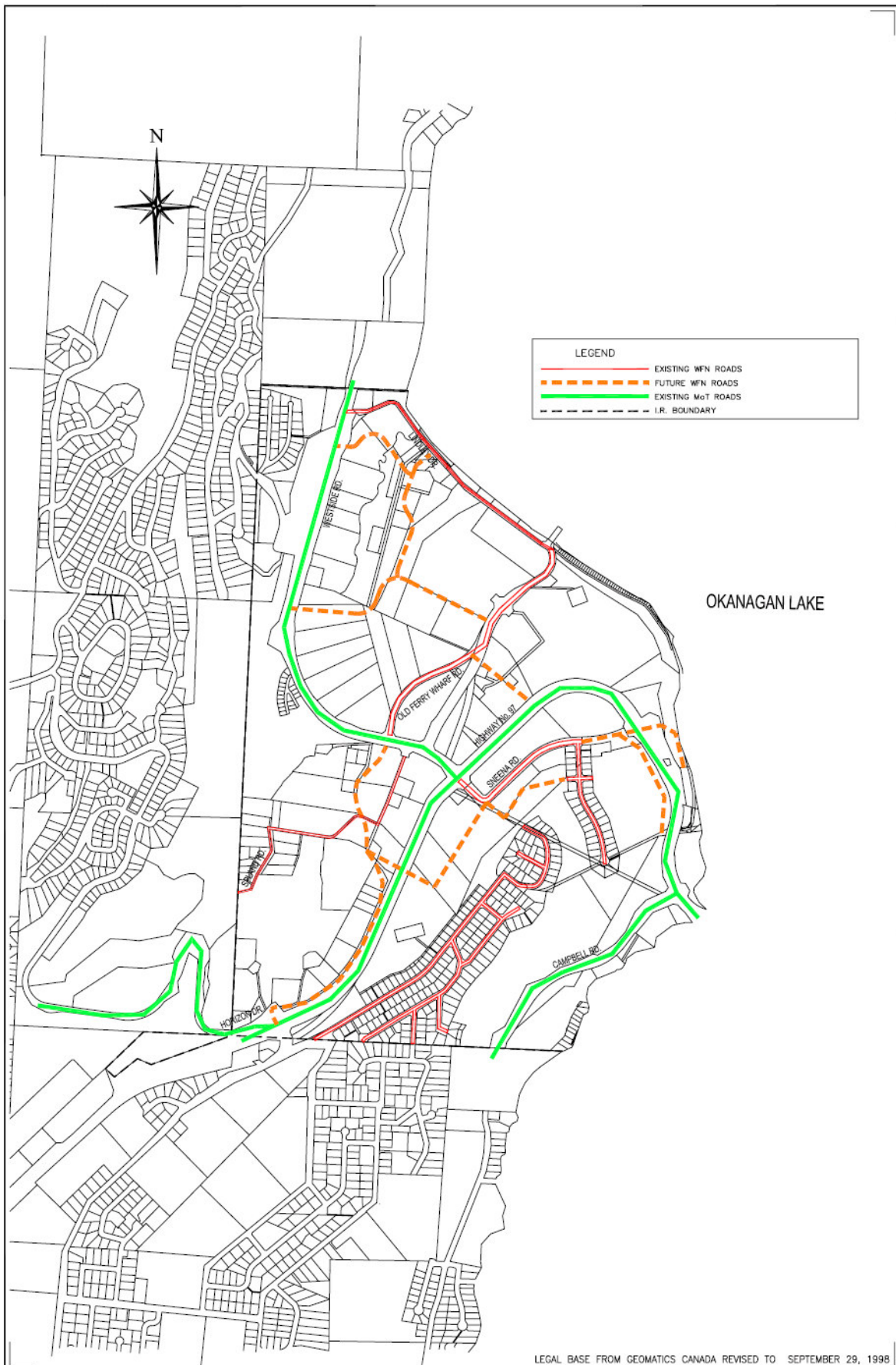
**FIGURE 3**  
 Date JULY, 2007 USL Job # 0704.0049.01  
 Drawing # 0704004901 Scale: N.T.S.











LEGAL BASE FROM GEOMATICS CANADA REVISED TO SEPTEMBER 29, 1998

 WESTBANK FIRST NATION	TSINSTIKEPTUM I.R. No. 10 EXISTING AND FUTURE ROADS	FIGURE 6			
		Date	JULY, 2007	USL Job #	0704.0049.01
		Drawing #	0704004901	Scale:	N.T.S.