



VIRTUAL WEBINAR

GIS Needs Assessment

Thu, July 2nd 2020

9:30 AM (PDT) – 60 minutes



Angie Derrickson

Manager, Training, Mentorship
& Professional Development

TMPD Virtual Webinar Welcome



2020 Virtual Webinar Schedule



Training, Mentorship & Professional Development

TMPD Virtual Webinar & Workshop 2020 Schedule

6.	GIS Needs Assessments	Jul 2
7.	Community Engagement (techniques, online tools, data collection)	Jul 16
8.	Impacts COVID 19 – Part 4 – TBD	Jul 30
9.	Framework Agreement Background	Aug 13
10.	Matrimonial Real Property Laws under Land Code, NALMA-COEMRP Partnership	Aug 27
11.	Mines and Minerals, Oil and Gas, Surface Access – Title & OIC	Sep 10
12.	Planning, Planning Types and Integrated Planning	Sep 24
13.	Property Transfer Tax, TULO Partnership (Tzeachten Case Study)	Oct 8
14.	Impacts COVID 19 – Part 5 – TBD	Oct 22
15.	Lands Advisory Board – Annual General Meeting	Oct 27-28
16.	Different meanings of Consultation & Engagement across Canada	Nov 5
17.	ATR/TLE, TULO Partnership (Brokenhead Case Study)	Nov 19
18.	Individual Agreement – Roles, Responsibilities & Expectations	Dec 3
19.	Historical Treaties	Dec 17

The screenshot shows the website's 'Upcoming Events' page. At the top, there is a navigation menu with options like 'WE ARE...', 'I AM A...', 'FRAMEWORK AGREEMENT', 'GOVERNANCE TOOLS', 'DISCOVER', 'EVENTS', and 'CONTACT US'. Below the menu, there are buttons for 'UPCOMING EVENTS' and 'PAST EVENTS'. A search bar is located below the menu. The main content area displays a list of events for June and July 2020. Each event entry includes a date and time, a topic, and a 'Find out more' link. For example, one event is 'Jun 4, 2020 @ 9:30 am - 10:30 am PDT' with the topic 'TMPD VIRTUAL WEBINAR Topic: Impacts COVID 19 – Part 3 – COVID 19 Laws & Emergency Management Laws'. Another event is 'Jul 2, 2020 @ 9:30 am PDT' with the topic 'TMPD VIRTUAL WEBINAR Topic: GIS Needs Assessments Date: Jul 2, 2020 Time: 9:30 AM (PDT) SAVE THE DATE Notice & Registration will be circulated once details are available.'



<https://labrc.com/events/>



TMPD Virtual Webinar Guidelines



Some administrative details to enhance the Webinar session:

1. Mute all your devices
2. Recording in Progress
3. SLIDO Questions, Comments, Closing Poll



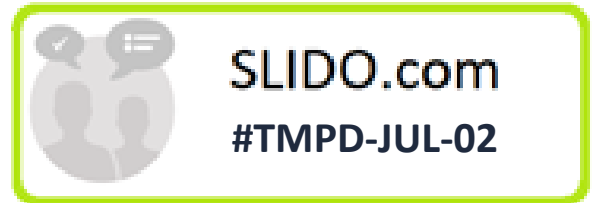


Virtual Webinar Questions & Poll

Connect laptop & mobile device to:

Website-App www.sli.do

Event Code [#TMPD-JUL-02](https://t.me/TMPD-JUL-02)



Presentation & Materials

are available online: www.labrc.com/event



Agenda & Objectives



9:30

Welcome & Introduction

9:35

Defining GIS

9:40

GIS A Tool for Land Management under the FA

9:50

GIS Support Survey Results

10:00

GIS Needs Assessment

10:10

GIS Support Services & Future Tools

10:20

SLIDO Poll & Virtual Networking

10:30

Closing



TMPD Virtual Webinar Presenters



Leeanna Rhodes

**Specialist, Geographic
Information Systems**



Stephen McGlenn

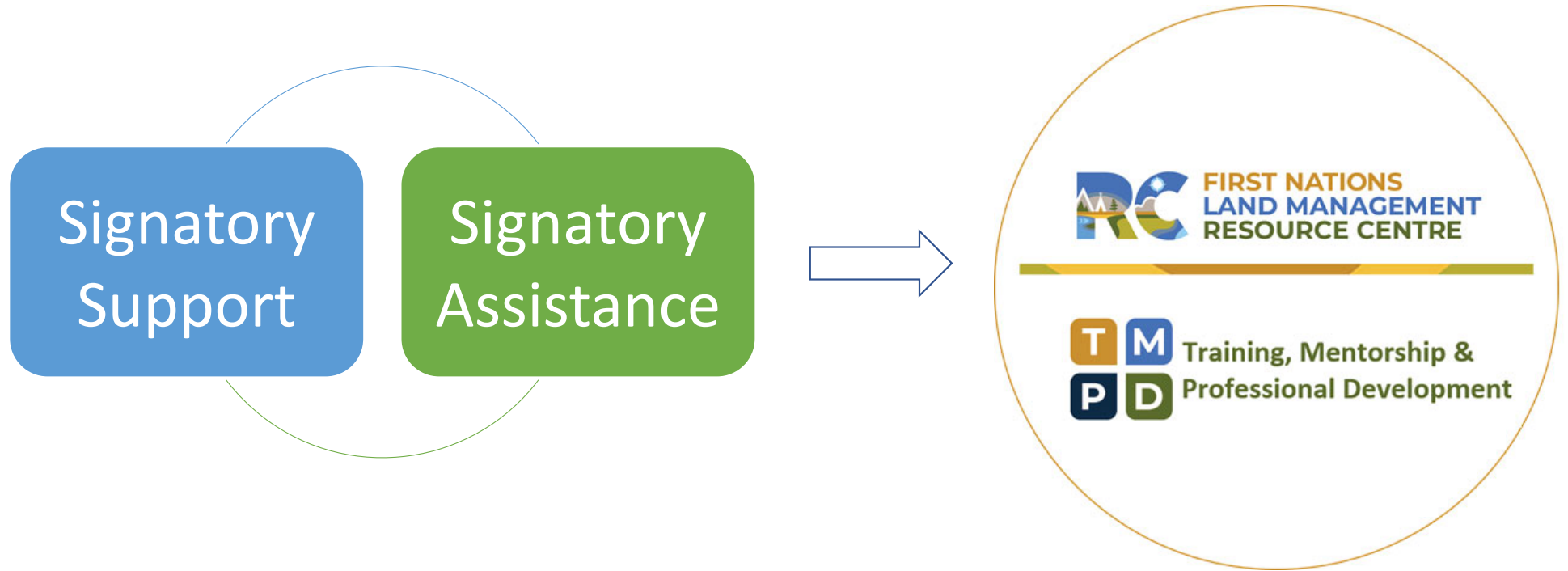
**Specialist, Land Use Planning
& Curriculum Delivery**



Zara Contin

**Specialist, Traditional
Knowledge**

Framework Agreement



“Supporting First Nations to exercise their Inherent Right to govern their Lands and Resources.”



What does GIS stand for? What is GIS?



G = Geographic = Geo referenced spatial representation used for mapping

I = Information = Data and Information that is linked to each feature in the map

S = System = Hardware that stores, prints, backs up, gathers and communicates

Tool for problem solving & aide in the decision-making processes

Presenting data results visually in a spatial environment. (Maps)

A GIS can do more than measure distance

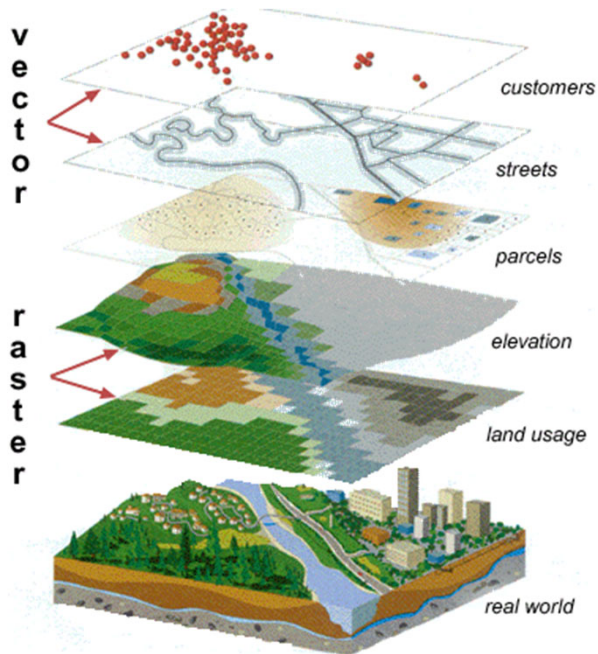
Geo-spatial data can be analyzed with GIS to determine:

- shared area relationships between features, e.g. soils and plants
- where the most and/or least of some feature exists and why e.g. Invasive Plants vs Native Plants near Primary right of ways
- the density of features in each space, e.g. Forest Species and Age Stands





FRAMEWORK AGREEMENT sections 12, 18 and 23

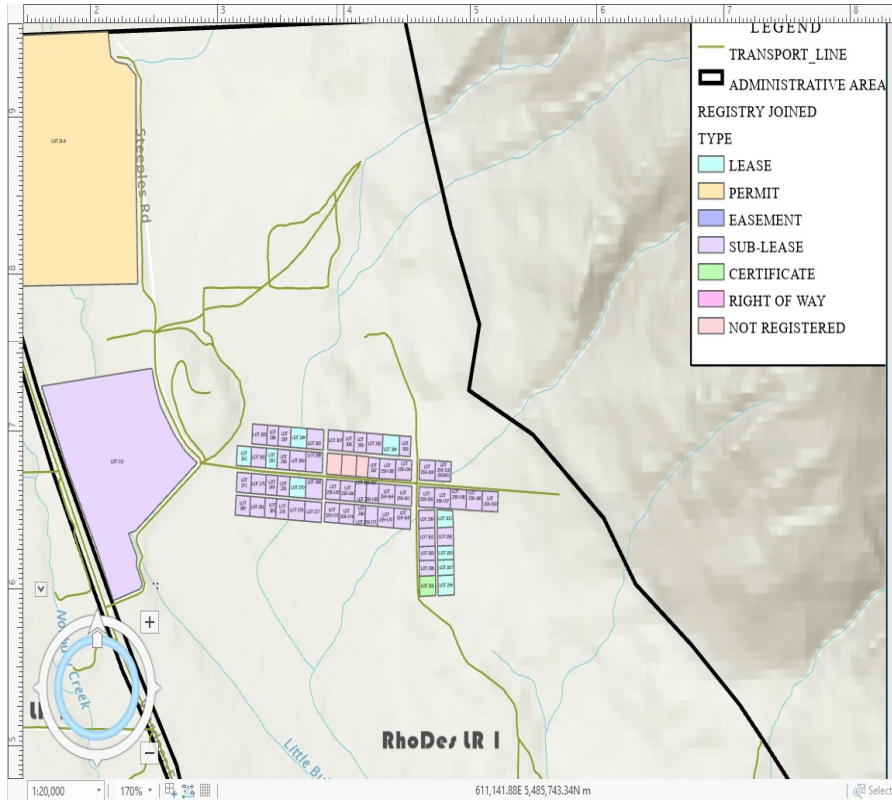


Section 12 - Land Management Powers

- Authority to grant interests in relation to your land to manage its natural resources
- LUP, EMP, CCP
- GIS Ensures all your planning efforts are in sync



GIS as a tool for Land Management under the FA



GIS Applications

Section 18 Law Making Powers

Community Planning

- Build your own data
- FNLRS with NRCan as one file on one map
- Beneficial to see land designations

Asset Management

- Infrastructure mapping
- Housing inventory
- Housing & infrastructure related data



GIS Applications

Land Development and Land Use Planning

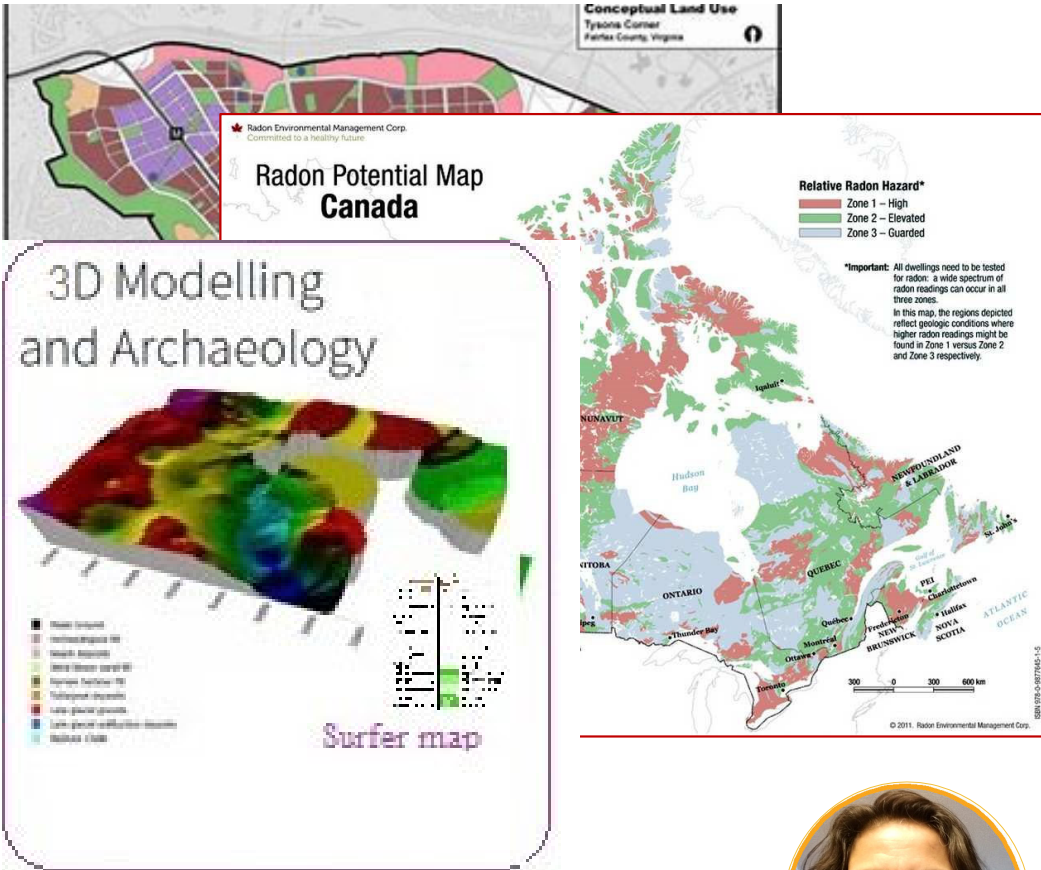
- Visioning, Development Concepts
- Land Use & Zoning
- Subdivisions
- Development Permitting
- Compliance Monitoring

Environmental Management Planning

- Natural Areas & Parks
- Good Water quality (surface water & ground water)
- Reduce Contamination
- Plan for Climate Change
- Start with your Environmental Site Assessments

Heritage Management Plan

- Cultural mapping, use and occupancy
- Traditional Place names
- Best measure in the protection of these sites



GIS SUPPORT SURVEY RESULTS



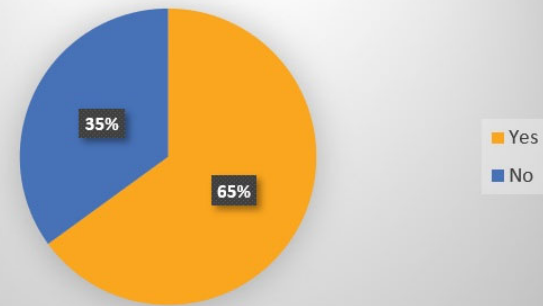
1) State your name, title, community and contact information.

2) What "Region is your First Nation Located?"

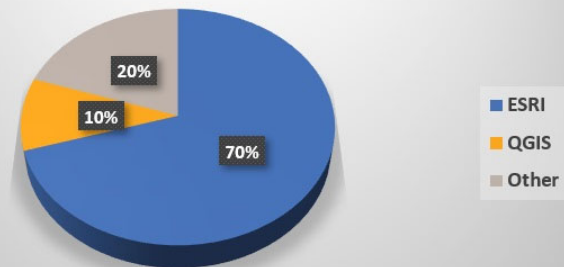


- 58 Survey monkey, 22 phone survey totaling 80 participants
- 52 said yes to GIS
- Out of those 37 communities are using ArcGIS

5) Do you have a GIS software?



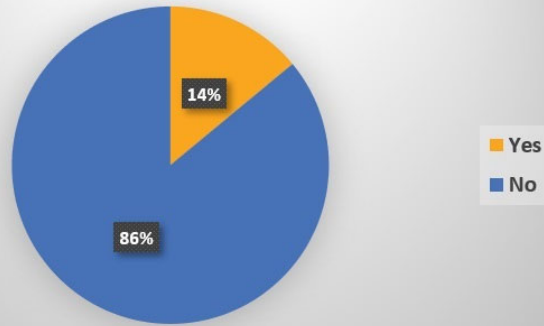
5A) If yes, what is the name of the company that supplied the software?



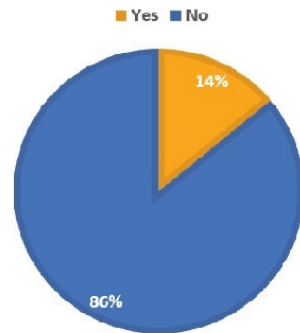
GIS SUPPORT SURVEY RESULTS



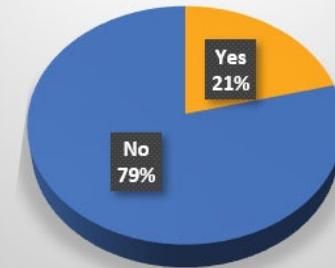
14) Do you have a GIS workplan?



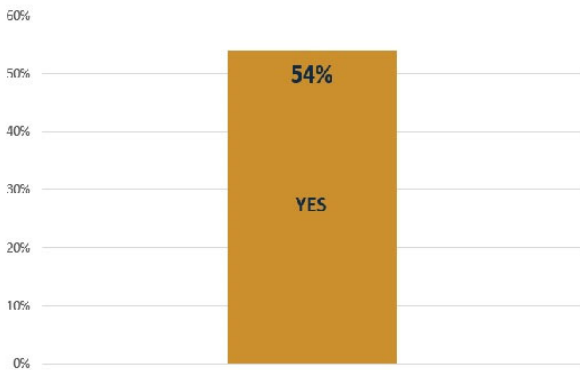
15) DO YOU HAVE A GIS STARTUP PROCEDURES MANUAL?



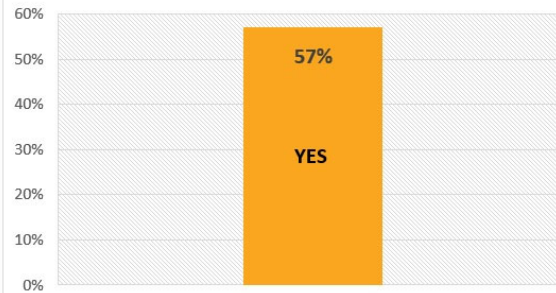
16) Do you have a GIS Data Management System?



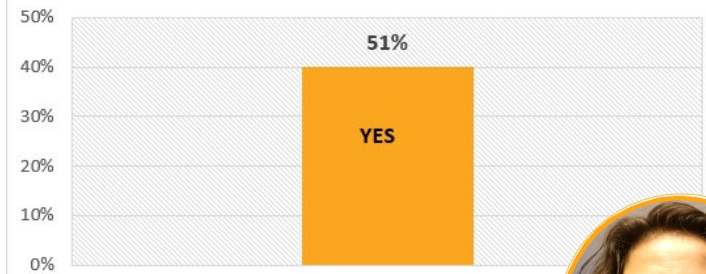
14A) If no, would you like assistance in developing a workplan?



15A) If no, would you like assistance in developing a GIS procedures manual?



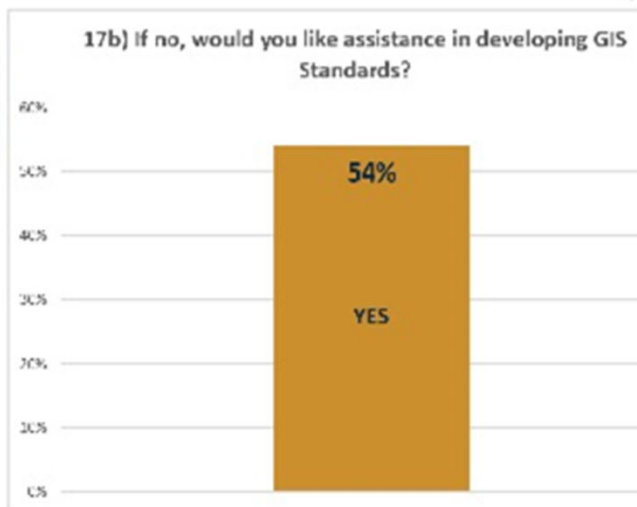
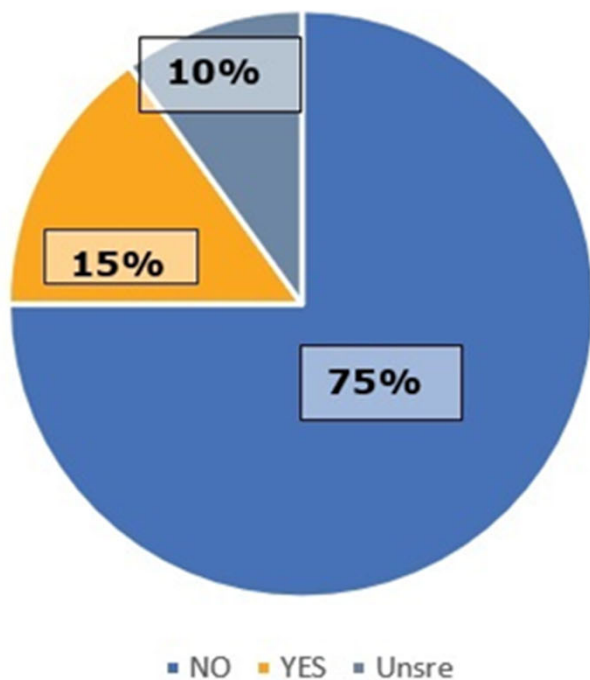
16A) If no, would you like assistance in developing a GIS data management system?



GIS SUPPORT SURVEY RESULTS



17) Do you have GIS standards setup?
Includes methodology, projections, symbology, scale etc.

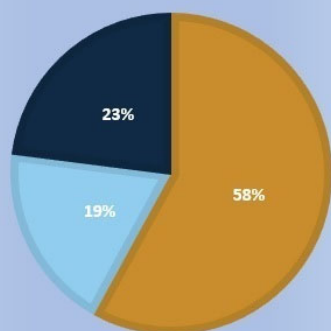


GIS SUPPORT SURVEY RESULTS

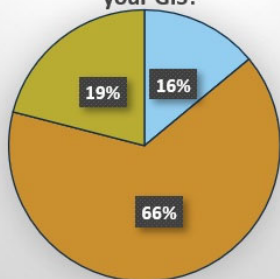


22) DO YOU USE THE FIRST NATIONS' LAND REGISTRY - FNLRS?

■ Yes ■ No ■ Other (ILRS - Indian Land Registry System)

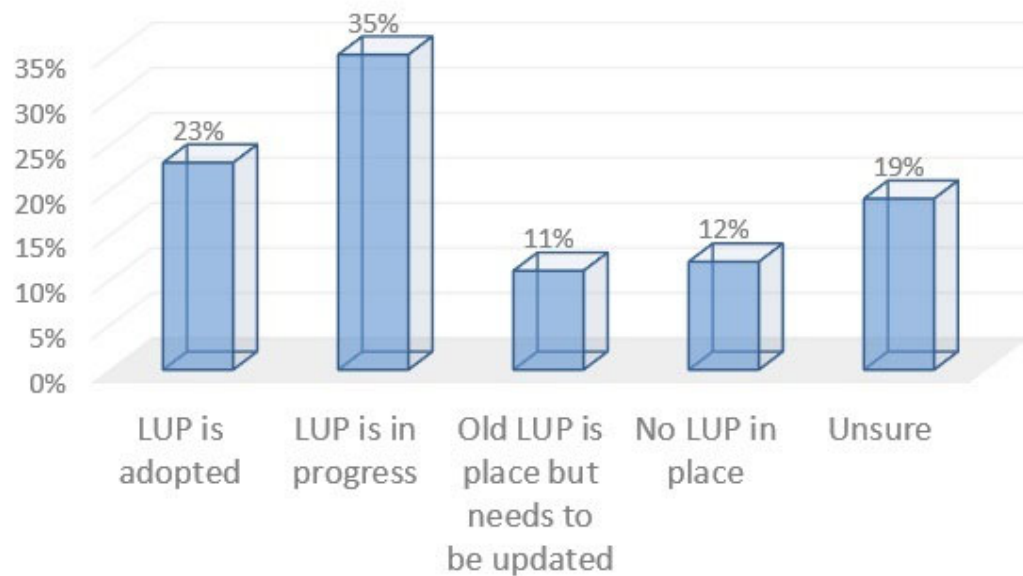


23) Do you have the FNLRS information as a layer on your GIS?



■ Yes
■ No
■ Don't know

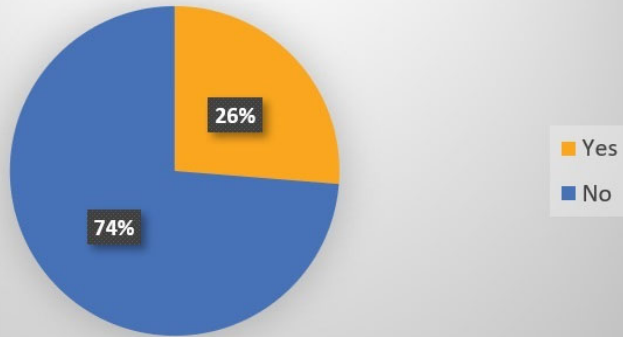
24) What state are you in with your Land Use Plan?



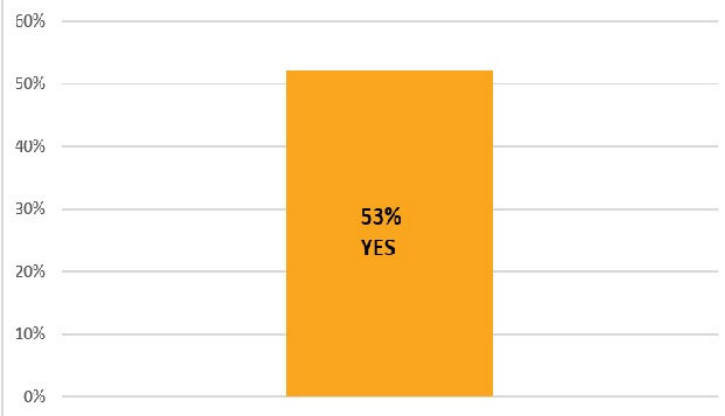
GIS NEEDS ASSESSMENT



3) Has your community conducted a GIS needs assessment?



3A) If No, would you like assistance with a GIS Needs Assessment?



- Building Tools and Templates from the results of the Survey
- 21 Yes, 58 No
- 31 of the 58 who said NO said Sure!
- My first tool, YAY!





Assists in the Decision – Is GIS right for you?

Determine goals and objectives

1. Building Capacity

Determine what components will need to be budgeted for

2. Where will the GIS Office be?

Value, effectiveness and consider that department's budget

3. Who will govern the GIS?

Conversations with Leadership to Land's committee



GIS NEEDS ASSESSMENT



Personnel

- Knowledgeable GIS User, 2 years experience
- maintain digital data, software updates

Hardware

- Computer, refer to the software requirements
- GPS, printer, plotter and more

Software – Requires research!

- Georeferencing, Editing, DB Connect and 3D Analysis
- Spatial Data requires a specific software for analysis



GIS Needs Assessment

Data

- Inventory of all data
- Digital or hardcopy maps
- Where to find existing data

Applications

- Agricultural, Oil & Gas, Mining
- Fire Assessment, Floods, Climate Change

When completed

- Achieve your mapping goals
- Beware of software proprietors
- Needs assessments clear and precise goals
- Confidence in what you want in a GIS system !



GIS SUPPORT AND TOOLS!



GIS Support Services

Geographical Information Systems (GIS) are an effective tool for Lands Governance under the *Framework Agreement for First Nations Land Management*. The Planning Hub's GIS Specialist will assist our signatory communities with challenges related to planning, design and maintenance of their GIS under land governance.

Geographical Information Systems (GIS) Support Services



First Nations Hub for Lands Governance Planning



Helping Communities move away from the Indian Act by:

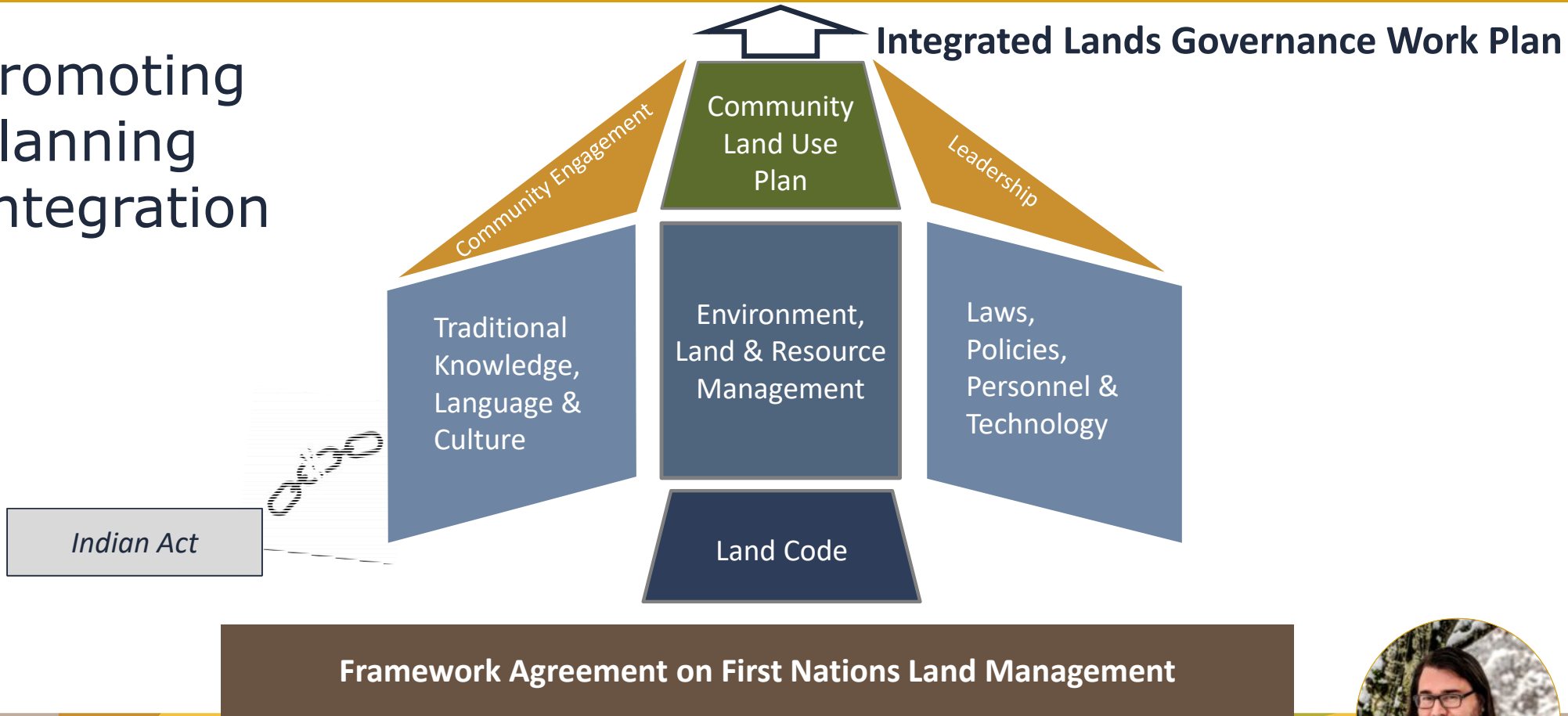
- Elevating and Re-establishing Traditional Indigenous Planning Practices
- Promoting Cohesive and Holistic Environmental Planning informed by Climate Change
- Bringing awareness



Hub Approach: Elevating Indigenous Planning Values, Approaches, Outcomes



Promoting Planning Integration



Hub Approach: Incorporating Traditional Values with Existing Plans



Incorporating Traditional Knowledge into Lands Governance Planning



Reviewing Lands Governance Planning documents from a traditional knowledge perspective



Promoting holistic approach, planning integration



Creating/updating TMPD resource content (courses, webinars, etc.)



SLIDO – Live Poll



Join at
slido.com

#TMPD-JUL-02

GIS Needs Assessment

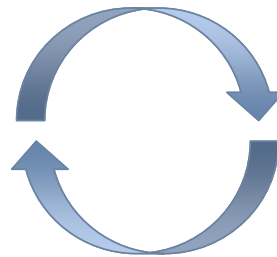




Virtual Networking



SLIDO.com
#TMPD-JUL-02



Raise you hand



Unmute Yourself



Turn Video On



Session Recorded





**FIRST NATIONS
LAND MANAGEMENT
RESOURCE CENTRE**



**Training, Mentorship &
Professional Development**

THANK YOU

Angie Derrickson
TMPD Manager

c. 250-469-1675
e. aderrickson@labrc.com

 LABRC.com

 ResourceCentre_TMPD

 @FNLMRC