



FIRST NATIONS  
LAND MANAGEMENT  
RESOURCE CENTRE



Training, Mentorship &  
Professional Development

## VIRTUAL WEBINAR

### First Nation HUB for Land Governance Planning: Updated Strategy

Thu, June 18<sup>th</sup> 2020

9:30 AM (PDT) – 60 minutes



**Angie Derrickson**

Manager, Training, Mentorship  
& Professional Development

# TMPD Virtual Webinar Welcome



# 2020 Virtual Webinar Schedule



Training, Mentorship & Professional Development

## TMPD Virtual Webinar & Workshop 2020 Schedule

4.	Impacts COVID 19 – Part 3 – Emergency Law Development	Jun 4
5.	First Nation Hub for Land Governance Planning – Updated Strategy	Jun 18
6.	GIS Needs Assessments	Jul 2
7.	Community Engagement (techniques, online tools, data collection)	Jul 16
8.	Impacts COVID 19 – Part 4 – TBD	Jul 30
9.	Framework Agreement Background	Aug 13
10.	Matrimonial Real Property Laws under Land Code, NALMA-COEMRP Partnership	Aug 27
11.	Mines and Minerals, Oil and Gas, Surface Access – Title & OIC	Sep 10
12.	Planning, Planning Types and Integrated Planning	Sep 24
13.	Property Transfer Tax, TULO Partnership (Tzeachten Case Study)	Oct 8
14.	Impacts COVID 19 – Part 5 – TBD	Oct 22
15.	Lands Advisory Board – Annual General Meeting	Oct 27-28
16.	Different meanings of Consultation & Engagement across Canada	Nov 5
17.	ATR/TLE, TULO Partnership (Brokenhead Case Study)	Nov 19
18.	Individual Agreement – Roles, Responsibilities & Expectations	Dec 3
19.	Historical Treaties	Dec 17



<https://labrc.com/events/>



# TMPD Virtual Webinar Guidelines



Some administrative details to enhance the Webinar session:

1. Mute all your devices
2. Recording in Progress
3. SLIDO Questions, Comments, Closing Poll

A logo for SLIDO.com featuring a stylized group of people icons and a checkmark.

**SLIDO.com**  
**#TMPD-JUN-18**





1. Virtual Webinar Questions
2. TMPD Signatory Impacts Survey

Connect laptop & mobile device to:

Website-App  
Event Code

[www.sli.do](http://www.sli.do)  
[#TMPD-JUN-18](https://twitter.com/TMPD-JUN-18)



## Presentation & Materials

are available online: [www.labrc.com/event](http://www.labrc.com/event)



# Agenda & Objectives



9:30

Welcome & Introduction

9:35

Lands Governance Planning and the FA

9:45

Overview of the First Nation Hub for Land Governance Planning

9:55

Activities of the Hub for 2020-21

10:00

Meet the Hub Specialists & RC Direct Community Support

10:20

Q&A, Discussion

10:30

Closing



# TMPD Virtual Webinar Presenters



**Daniel Millette**  
Director, Planning & Readiness



**Stephen McGlenn**  
Specialist, Land Use Planning & Curriculum Delivery

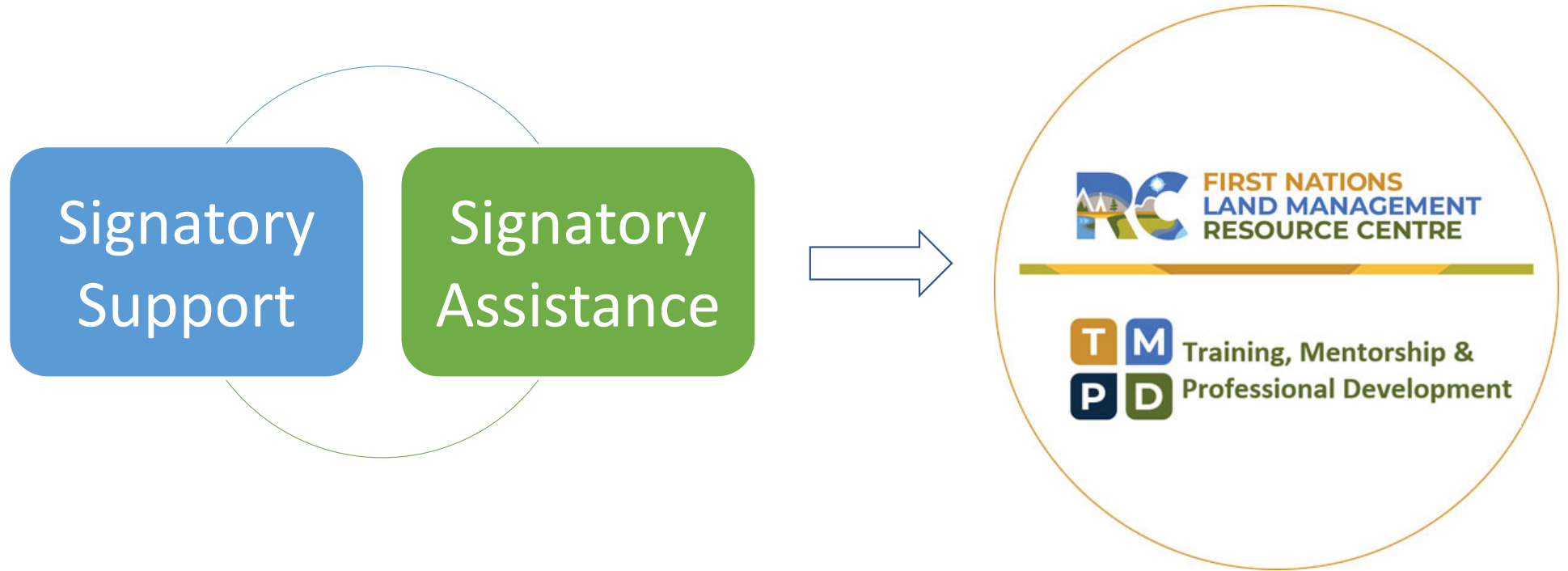


**Leeanna Rhodes**  
Specialist, Geographic Information Systems



**Zara Contin**  
Specialist, Traditional Knowledge

# Framework Agreement



*“Supporting First Nations to exercise their Inherent Right to govern their Lands and Resources.”*





# What is Planning?

“Planning means the scientific, aesthetic, and orderly disposition of land, resources, facilities and services with a view to securing the physical, economic and social efficiency, health and well-being of urban and rural communities.”

-Canadian Institute of Planners (CIP)

**MCIP**

Member of the Canadian  
Institute of Planners

**R.P.P.**

Registered Professional Planner



# Land Governance Activities



**Governance**



**Compliance**



**Management**



**Lands  
Governance  
Planning**



# Lands Governance Planning

“Exercising your Land Code jurisdictional powers and authorities in a coordinated fashion to achieve a desired outcome for your community, lands and resources.”

## Examples Plans

- High level Governance documents
  - Land Use Plan
  - Comprehensive Community Plan
  - Chief & Council Strategic Plan
- Operational Plans
  - Emergency Response Plan
  - Environmental Management Plan
  - Solid Waste Management Plan
  - Resource Management Plan
- Other Plans
  - Subdivision Plan
  - Site Development Plan
  - Traditional Use & Occupancy Study/Plan



# Lands Governance Planning and the FA



**Framework  
Agreement on  
First Nations  
Land  
Management**



Law-making  
Authority, e.g.  
“Land-use”  
(s. 18.2)



Community  
Approvals



Rules &  
procedures



Land Protection



Land  
Development



Environmental  
Management &  
Conservation





# Planning & Governance

## Common Elements of Planning

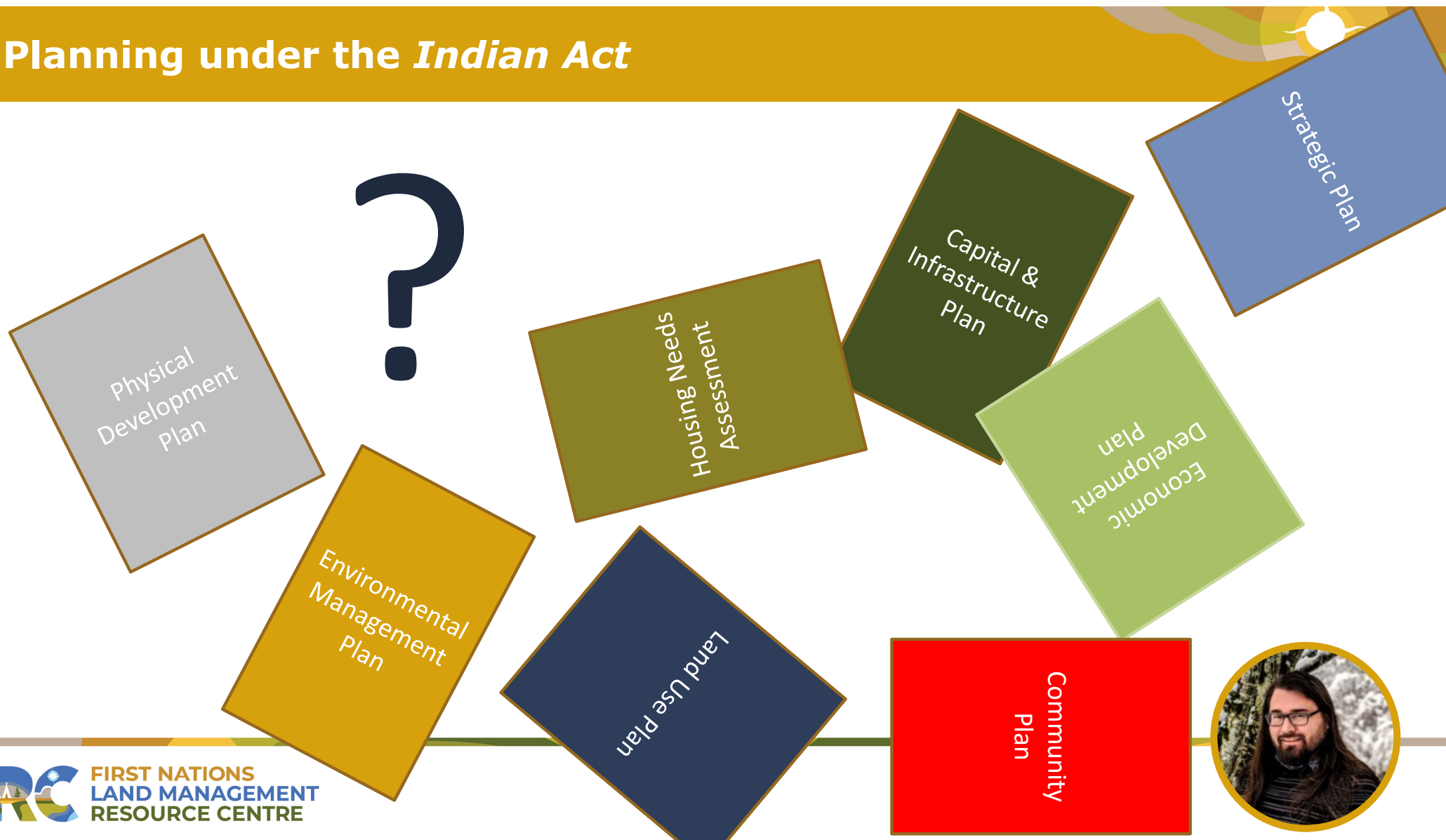
- Community Driven
- Accountability & Transparency
- Vision: Plans are Forward Looking
- Allocate Limited Resources
- Promote Unity & Policy Integration in your organization
- Improve Decision-Making
- Evaluate your performance
- Sustainability
- Under the FA, Plans can be rooted in First Nation Law

## UNDP 5 Principles of Good Governance

- **Legitimacy and voice** (based on participation in decision-making and consensus orientation)
- **Strategic direction** (based on planning and a willingness to be held accountable for results)
- **Performance** (with responsive organizations and effective and efficient results)
- **Accountability** (to the public, with transparency based on the free flow of information), and
- **Fairness** (based on equity and rule of law).



# Planning under the *Indian Act*





Typically has provisions for monitoring & evaluating, reviewing and updating the LUP, and reporting back to the community on the implementation of the Plan.

Can set policy direction for capital, infrastructure and housing, public works, emergency management, climate change adaptation, natural resource management

Set out land development procedures

Give direction on environmental and other community priorities, inform/identify future laws and other plans for adoption

Typically includes land-use designation maps, provides policy direction for future Law and planning development (capital, infrastructure, housing, etc.).

Typically requires community approval (e.g. ratification). Adopted via Land Use Plan Law

Becomes the Official Plan of your community. Must be followed by Council, staff, economic development, etc. Can take direction or inform other official plans, e.g. CCP, Strategic Planning, etc.

Land Use Plan

Land Use & Zoning Law

Community Land Code



Framework Agreement on First Nations Land Management



## *Etuaptmumk* "Two-Eyed Seeing"

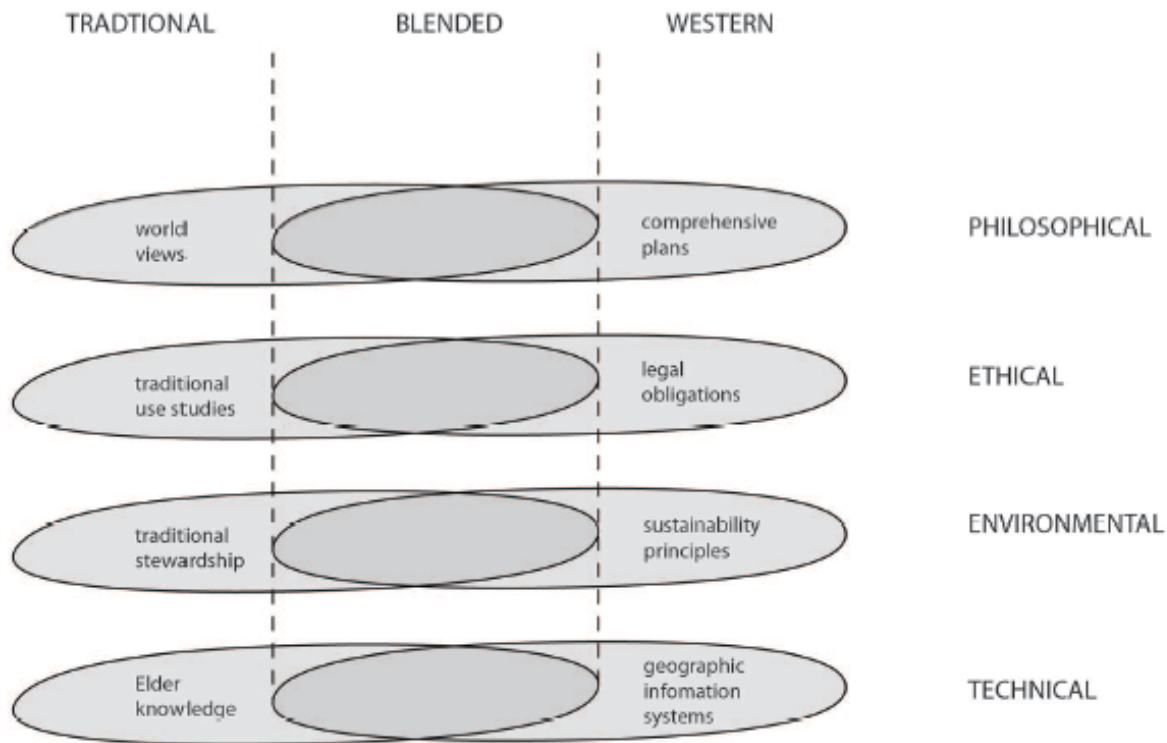
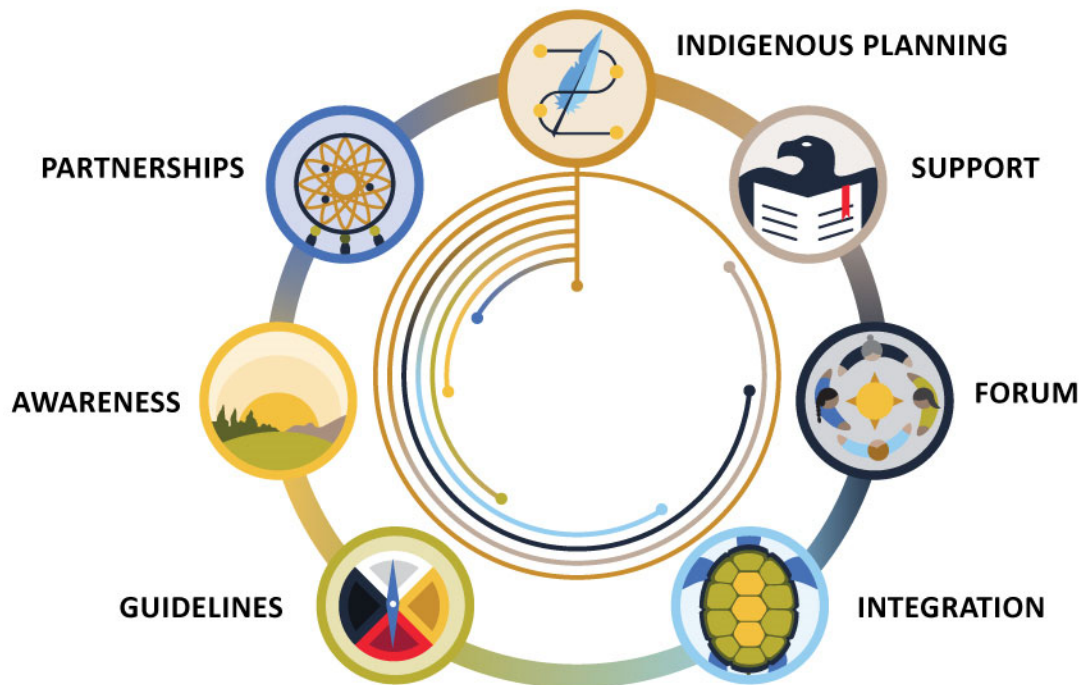


Figure: Examples of Blended Planning Elements. From "Land Use Planning on Aboriginal Lands – Towards a New Model for Planning on Reserve Lands" by Daniel Millette. Published in the Canadian Journal of Urban Research, volume 20 Issue 2, pages 1-xx. 2011.





# First Nations Hub for Lands Governance Planning



LAND GOVERNANCE PLANNING HUB

Helping Communities move away from the Indian Act by:

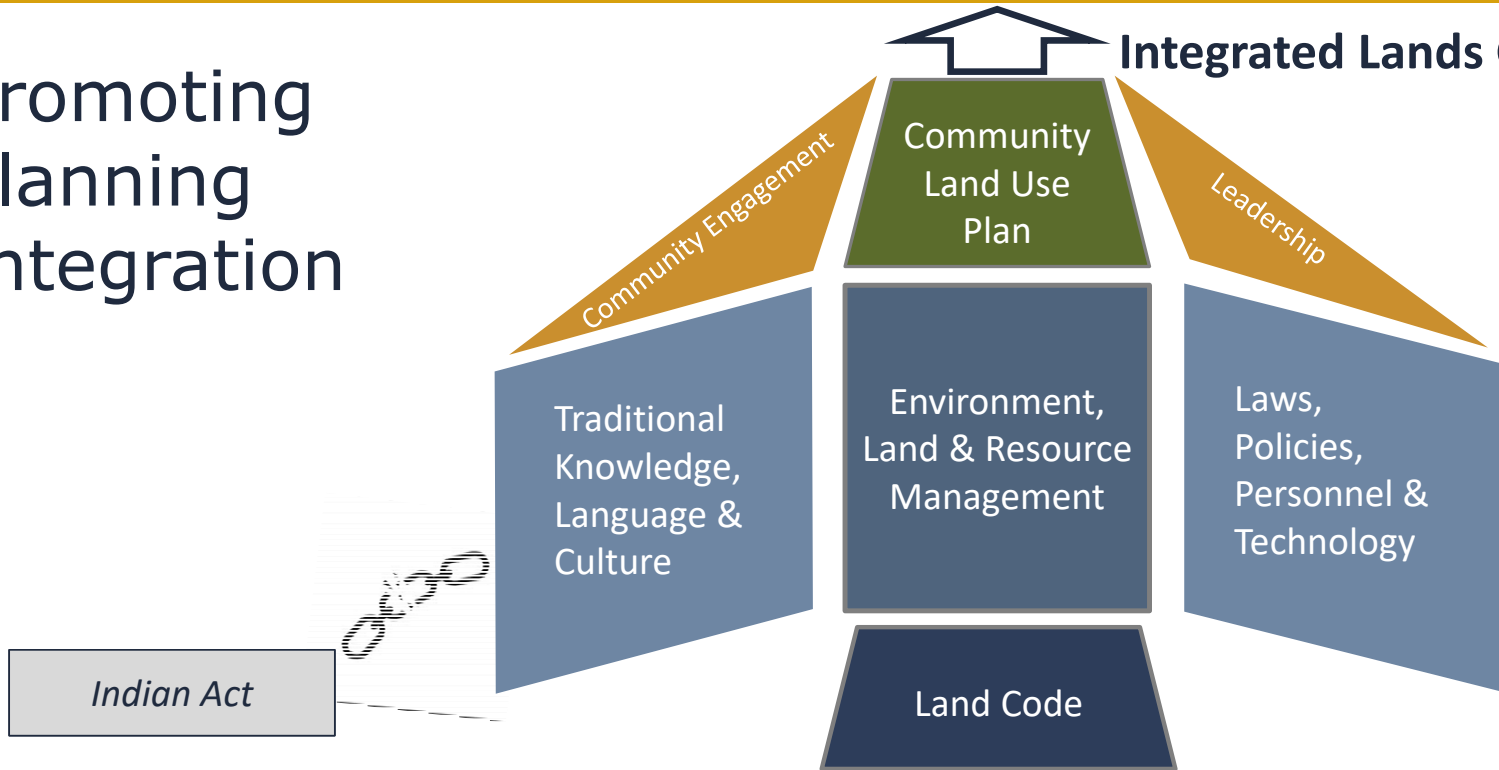
- Decolonizing Land Use Planning in a New Era of First Nation Self-Government
- Elevating and Re-establishing Traditional Indigenous Planning Practices
- Promoting Cohesive and Holistic Environmental Planning informed by Climate Change





# Promoting Planning Integration

## Integrated Lands Governance Work Plan



Framework Agreement on First Nations Land Management



# Activities of the Hub, 2020-21



## Growth

- Initial Launch
- Website: <https://labrc.com/planning-hub/>
- Hiring
  - Specialist, Land-Use Planning
  - Specialist, Geographic Information Systems
  - Specialist, Traditional Knowledge
  - Coming soon – Specialist, Environmental Planning



**Zara Contin**  
Specialist, Traditional  
Knowledge



**Leeanna Rhodes**  
Specialist, Geographic  
Information Systems



# Activities of the Hub, 2020-21



Growth



## Learning & Outreach

- Surveys, questionnaires and inventories:
  - LUP
  - GIS
  - TK
- RC Staff Training
- Emergency Management & COVID
- Responding to and research specific Lands Governance Issues



# Activities of the Hub, 2020-21



Growth



Learning &  
Outreach



**TMPD**

- **Virtual Webinars**
  - Emergency Management
  - First Nation Hub for Land Governance Planning
  - GIS Needs Assessment (tentative: July 2)
  - Community Engagement (tentative: July 16)
  - Planning, Planning Types and Integrated Planning (tentative: Sep 24)
- **Virtual Workshops**
  - Climate Change (TBD)
  - Understanding & Facilitating Land Development (Fall 2020)
- **Online Courses**
  - LUP
  - GIS
  - TK
- **Lands Governance Manual Review**
  - Land Use Planning
  - GIS
  - Climate Change
- **Knowledge Repository**
- **Direct Community Support**



# Activities of the Hub, 2020-21



Growth



Learning &  
Outreach



TMPD



## Land-Use Planning Funding Initiative

- 2018-19
  - 10 communities funded
- 2019-20
  - 20 communities funded
- 2020-21
  - TBD
- Hub Activities:
  - Tracking deliverables
  - Distributing funding
  - LUP advice and support



# Activities of the Hub, 2020-21



Growth



Learning &  
Outreach



TMPD



Land-Use Planning  
Funding Initiative



**Direct  
Community  
Support**

- Virtual support (COVID-19)
  - Community Workshops
  - Specific Lands Governance Planning-related advising & support
    - LUP
    - GIS
    - TK
    - More coming soon!



# Meet the Hub Specialists!



## GIS Support Services

Geographical Information Systems (GIS) are an effective tool for Lands Governance under the *Framework Agreement for First Nations Land Management*. The Planning Hub's GIS Specialist will assist our signatory communities with challenges related to planning, design and maintenance of their GIS under land governance.

**Leeanna Rhodes**  
Geographic Information Systems Specialist

## Geographical Information Systems (GIS) Support Services





# Meet the Hub Specialists!



Incorporating Traditional Knowledge into Lands Governance Planning

**Zara Contin**  
**Traditional Knowledge Specialist**



Reviewing Lands Governance Planning documents from a traditional knowledge perspective



RC Staff Survey



Promoting holistic approach, planning integration



Creating/updating TMPD resource content (courses, webinars, etc.)



# Meet the Hub Specialists!



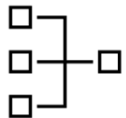
New and emerging field of Environmental Planning – promoting innovation and best-practices



Environmental Planning improves decision-making



Holistic Approach



Integrated Planning

## Coming soon: Environmental Planning Specialist



Climate Change and other environmental planning areas



Creating/updating TMPD resource content (courses, webinars, etc.)

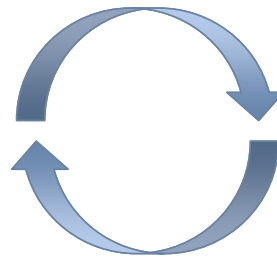




# Virtual Networking



SLIDO.com  
#TMPD-JUN-18



## Raise you hand

- Unmute Yourself
- Turn Video On
- Session Recorded





**THANK YOU!**

**Angie Derrickson**  
TMPD Manager

c. 250-469-1675

e. [aderrickson@labrc.com](mailto:aderrickson@labrc.com)

 LABRC.com

 ResourceCentre\_TMPD

 @FNL MRC