

# Community Profile



XYZ First Nation

## About the Community

XYZ First Nation is a slowly growing community focused on long-term environmental stewardship, infrastructure planning, and community well-being. Recent growth, increased waste volumes, and concerns about existing waste systems have led the community to begin developing a solid waste management plan.

## Community Snapshot

- Population: 752
- Households: 240
- Growth trend: Slow increase
- Distance to landfill: 85 km
- Main industries: Agriculture/Trades/Community Services
- Waste management staff: 1 full-time + seasonal support
- Small housing development planned
- Community concern: illegal dumping and litter

### PROJECTED GROWTH & WASTE PROJECTIONS



POPULATION GROWTH

**752**  
people in 2024

Projected  
**820+**  
by 2034



HOUSING DEVELOPMENT

**25**  
new housing units  
planned over the  
next 10 years



PROJECTED WASTE VOLUMES

Estimated waste volumes  
may increase by  
**10-15%**  
over the next decade



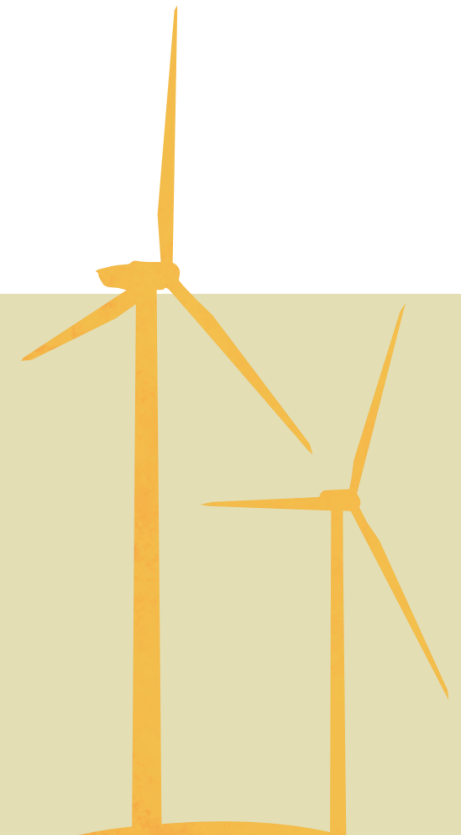
INFRASTRUCTURE & SERVICES

Projected waste volumes  
may place additional  
pressure on current  
transfer station capacity



CURRENT PARTNERSHIPS

**2**  
Regional landfill and  
hauling services are  
shared with 2 nearby  
communities



# COMMUNITY & ENVIRONMENTAL CONTEXT MAP

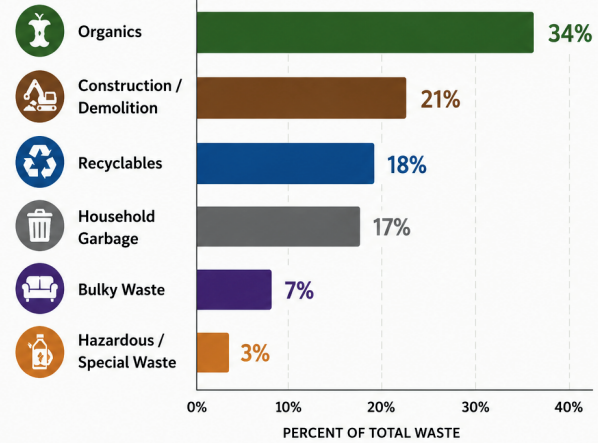
## SURVEY SUMMARY



COMMUNITY FEATURES	WASTE & SERVICES	ENVIRONMENTAL CONSIDERATIONS
Community Boundary	Transfer Station	Grassland / Prairie
Main Road	Community Recycling Drop-off	Wetland Area
Local Road / Trail	Community Centre	Wildlife Habitat / Sensitive Area
Building / Residence	School	Intermittent Watercourse / Seasonal Drainage
Waterbody	Health Centre	
Watercourse / Stream	Community Concern: Illegal Dumping / Litter	
Intermittent Watercourse / Seasonal Drainage		
Agriculture / Cultivated Land		
Shelterbelt / Shrubland		

## 2024 WASTE AUDIT SUMMARY

### WASTE COMPOSITION BY MATERIAL TYPE

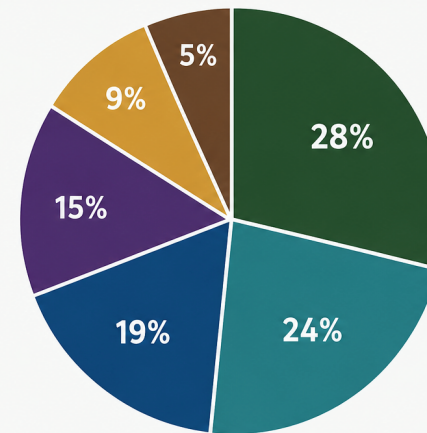


Total Materials Assessed: 100% (based on weight)

Audit conducted: June–July 2024

## COMMUNITY SURVEY RESULTS

Top Concerns Identified by Community Members



Illegal dumping and litter 28%

Protecting land and water 24%

Better recycling options 19%

Planning for future growth 15%

Reducing long-term costs 9%

Wildlife and environmental impacts 5%

Based on responses from community survey and engagement sessions held in 2025. Total responses: 186 community members.